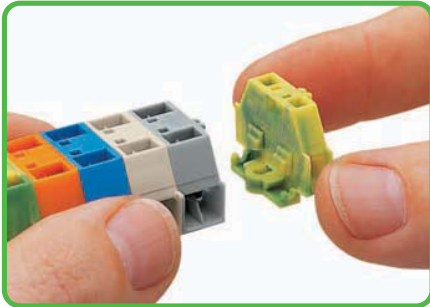
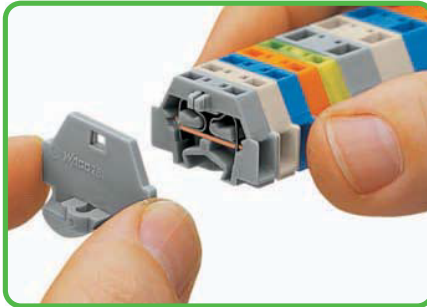


Modular Terminal Blocks and Terminal Strips 260 to 262 Series

Assembly

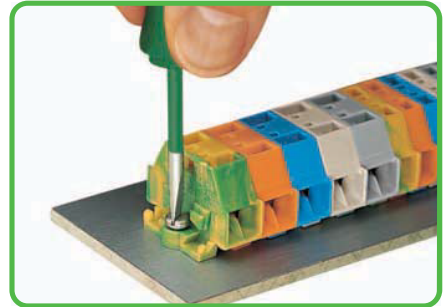


Assembling modular terminal blocks into terminal strips.



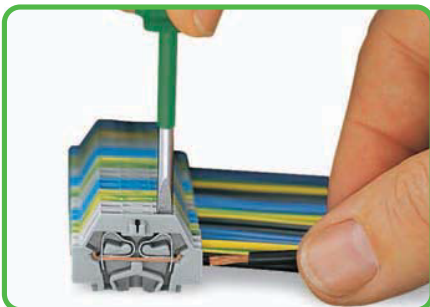
Mounting an end plate.

Fixing



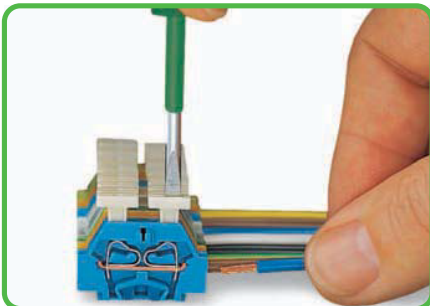
Terminal strip with fixing flanges, screw mount.

CAGE CLAMP® connection

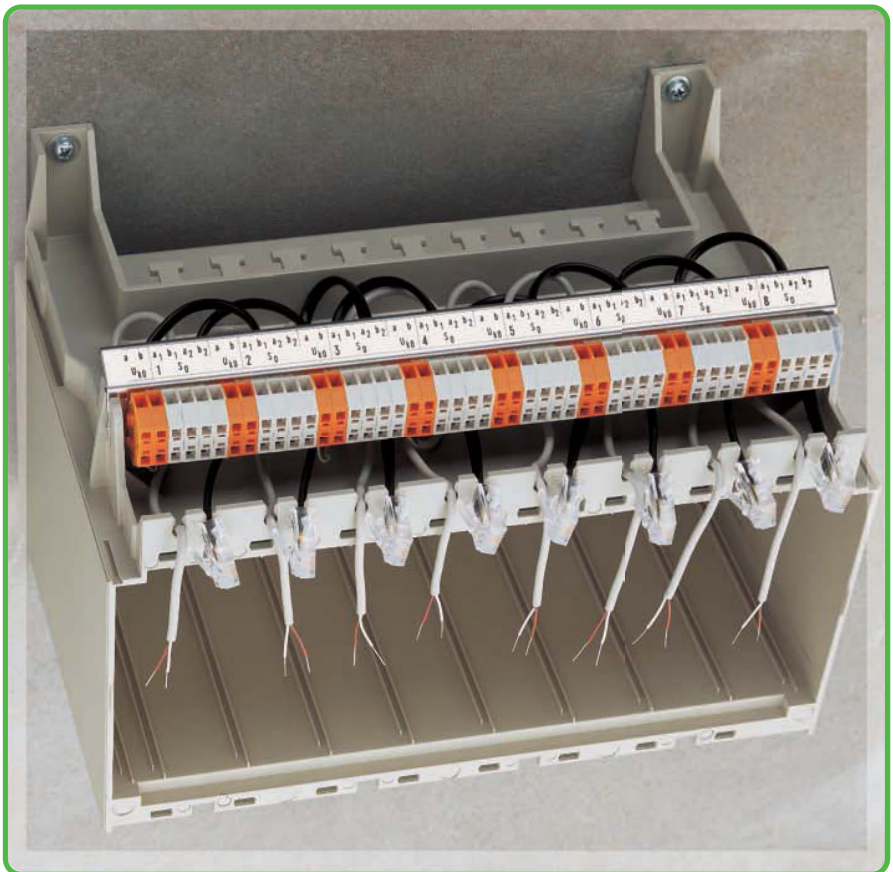


Conductor termination

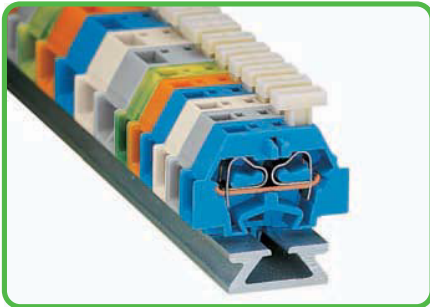
CAGE CLAMP® connection



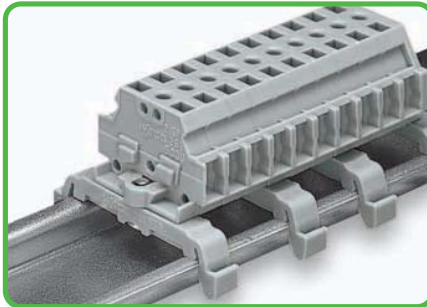
Conductor termination via push-button.



Types

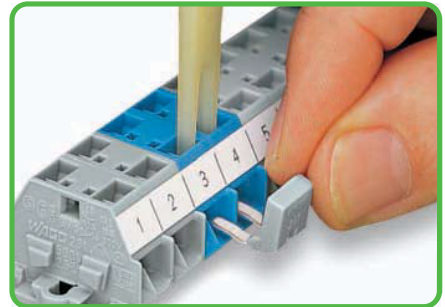


Terminal strip with push-buttons on one side.



Terminal strip with marker slot for miniature WSB Quick marking system.

Commoning



Commoning with comb-style jumper bar.

CAGE CLAMP®
clamps the following
copper conductors:*

solid

stranded

fine-stranded,
also with tinned
single strands

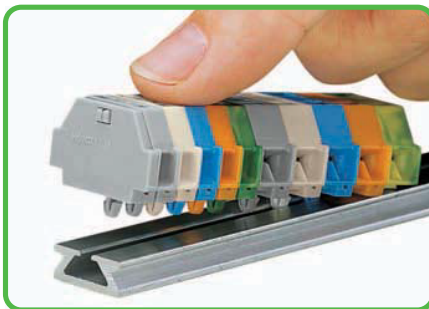
* For aluminum conductors, see notes in Section 14.

- Description and Handling -

Fixing



Terminal strip with snap-in mounting feet, mounting in holes.

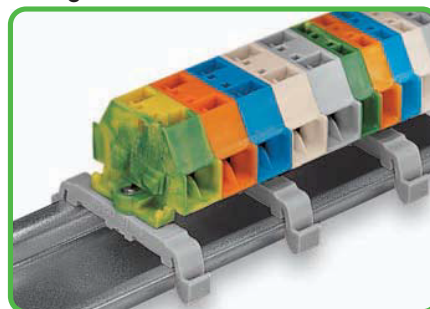


Terminal strip with snap-in mounting feet, mounting onto special aluminum rail.



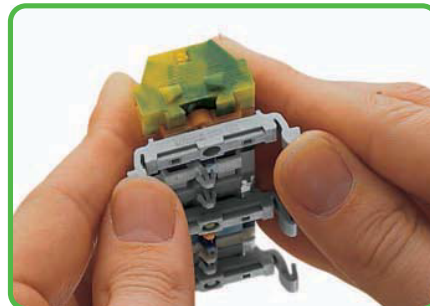
Terminal strip with fixing flanges, screw mounting of 209-123 mounting adapter
(The distance between mounting adapters should be 35 - 40 mm / 1.378 - 1.575 in max.).

Fixing

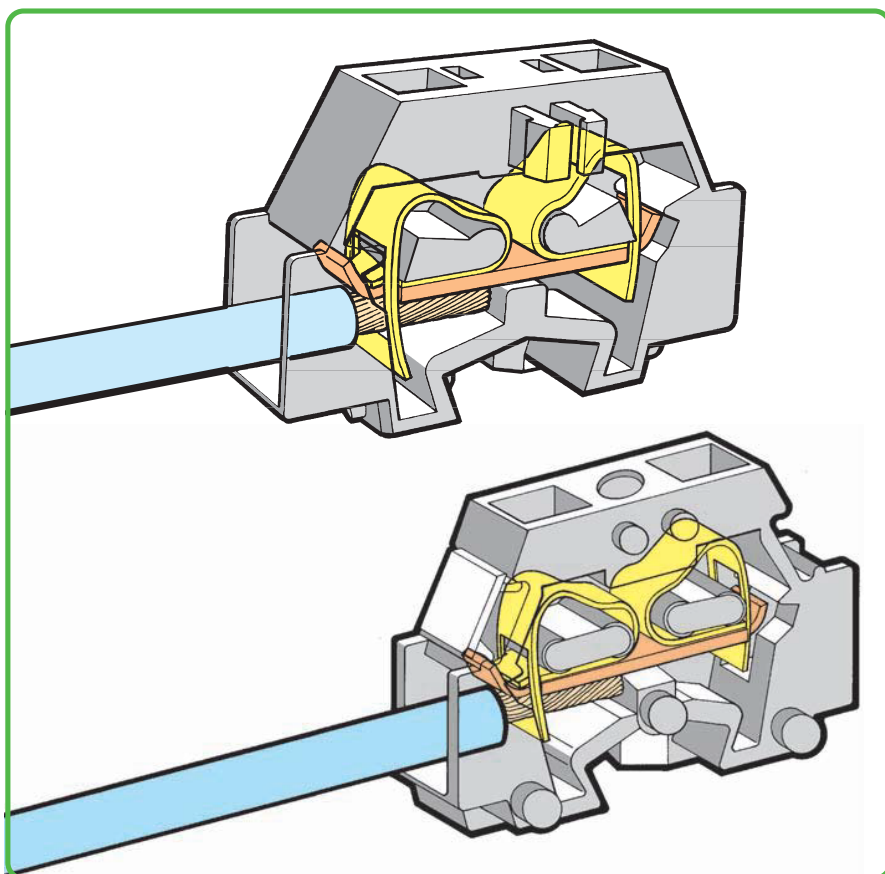


Terminal strip with fixing flanges, on DIN 35 rail.

Fixing



Terminal strip with snap-in mounting feet, connecting to 209-123 mounting adapter
(The distance between mounting adapters should be 35 - 40 mm / 1.378 - 1.575 in max.).



Marking

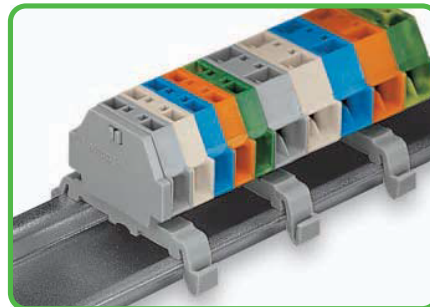


Marking with self-adhesive marker strips.

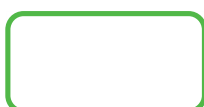


Marking by direct printing (on request).

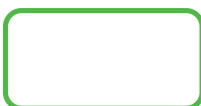
Fixing



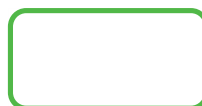
Terminal strip with snap-in mounting feet, on DIN 35 rail.



fine-stranded,
tip-bonded



fine-stranded,
with ferrule ①
(gaslight crimped)



fine-stranded,
with pin terminal
(gaslight crimped)

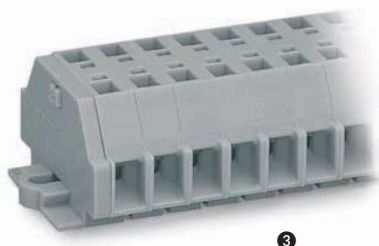
① When using ferruled conductors, it is necessary to use a terminal block one size larger than the nominal cross section of the wire.

Terminal Strips with Fixing Flanges or Snap-in Mounting Feet 2.5 mm² 261 Series

CAGE CLAMP®

9
445

0.08 - 2.5 mm ² 500 V/6 kV/3 ① I _N 24 A	AWG 28 - 14 300 V, 15 A ③ 300 V, 20 A ④	0.08 - 2.5 mm ² 500 V/6 kV/3 ① I _N 24 A	AWG 28 - 14 300 V, 15 A ③ 300 V, 20 A ④
Pole width 6 mm / 0.236 in 8 - 9 mm / 0.33 in ②		Pole width 10 mm / 0.394 in 8 - 9 mm / 0.33 in ②	



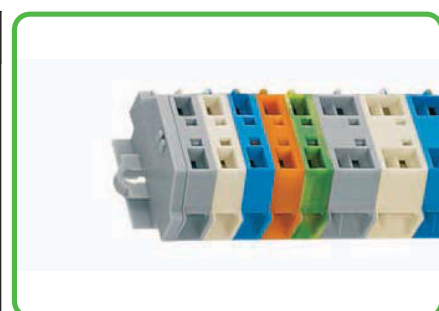
③



③

- ① 500 V = rated voltage
6 kV = rated surge voltage
3 = pollution degree
(also see Section 14)
- ② Strip length, see packaging or instructions.
- ③ Terminal blocks with blue insulation are suitable for Ex i applications
Item no. suffix .../000-006
- ④ For longer strips and/or assemblies of different colors, please contact factory

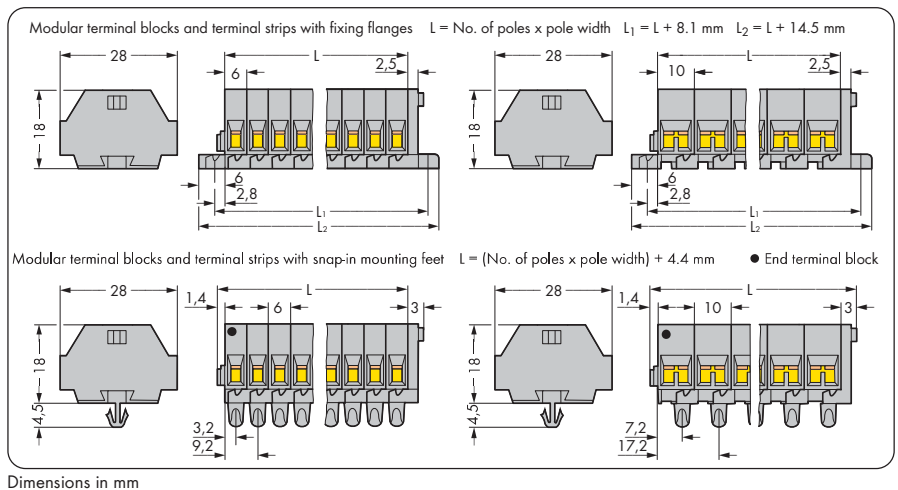
Pole No.	Item No.	Pack. Unit	Pole No.	Item No.	Pack. Unit
2-conductor terminal strip with fixing flanges, gray			4-conductor terminal strip with fixing flanges, gray		
2	261-102	100	2	261-202	100
3	261-103	100	3	261-203	100
4	261-104	100	4	261-204	100
5	261-105	200	5	261-205	100
6	261-106	50	6	261-206	50
7	261-107	50	7	261-207	50
8	261-108	50	8	261-208	50
9	261-109	50	9	261-209	50
10	261-110	25	10	261-210	25
11	261-111	25	11	261-211	25
12 ④	261-112	25	12 ④	261-212	25
2-conductor terminal strip with snap-in mounting feet, gray			4-conductor terminal strip with snap-in mounting feet, gray		
2	261-152	100	2	261-252	100
3	261-153	100	3	261-253	100
4	261-154	100	4	261-254	100
5	261-155	100	5	261-255	100
6	261-156	50	6	261-256	50
7	261-157	50	7	261-257	50
8	261-158	50	8	261-258	50
9	261-159	50	9	261-259	50
10	261-160	25	10	261-260	25
11	261-161	25	11	261-261	25
12 ④	261-162	25	12 ④	261-262	25



Terminal strip with fixing flanges,
for screw or similar mounting types,
fixing hole 3.2 mm Ø (with 209-123 mounting adapter
also for DIN 35 rail)



Terminal strip with snap-in mounting feet,
for plate thickness 0.6 mm - 1.2 mm (0.02 in - 0.047 in),
fixing hole 3.5 mm Ø (fits 210-154 aluminum rail or with
209-120 mounting adapter for DIN 35 rail)



For list of approvals and user guide, see pages 634 to 637.

WAGO®