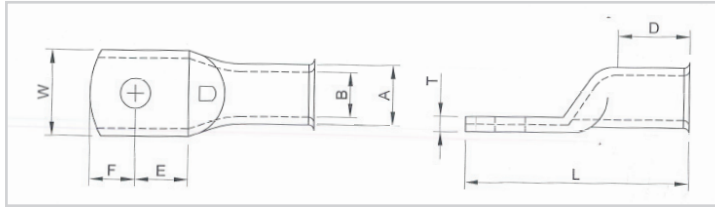


# HEAVY DUTY TERMINAL LUGS -TYPE HD

The numerical part of the series reference denotes the conductor cross sectional area in mm<sup>2</sup>. Thus to order, for example, a terminal for a 10mm<sup>2</sup> conductor and a M12 stud size the full ordering reference is CAT10-12.

NOTE: Stud Size B = Blank Palm | Also available with no inspection hole



LML Products Ltd

T: 01249 810000

E: [sales@lmlproducts.co.uk](mailto:sales@lmlproducts.co.uk)

W: [www.lmlproducts.co.uk](http://www.lmlproducts.co.uk)

Stocked Items Available  
on Next Day Service

Volume Discounts Available,  
Please Call for Prices

Enhanced or Modified Specifications  
Available - Please Send Us Details

CAT REF	STUD; SIZE (MM)	A	B	W	E	F	D	L	T
CAT1.5	4,5	3.6	1.9	8.0	5.0	4.0	6.0	18.0	0.9
	6	3.6	1.9	10.0	6.0	5.5	6.0	20.0	0.6
CAT2.5	4	3.9	2.4	7.7	5.0	4.0	7.5	20.0	1.0
	5	3.9	2.4	10.0	5.5	5.5	8.0	21.5	1.1
	6	3.9	2.4	10.0	6.5	5.5	8.0	21.5	0.6
CAT4	8	4.4	2.6	12.0	9.0	6.0	8.0	26.5	0.7
	4	4.7	3.0	10.0	6.0	5.0	8.0	21.5	1.1
	5,6	4.7	3.0	10.0	5.5	5.5	8.0	21.5	1.1
CAT6	8	4.7	3.0	12.0	9.0	6.0	7.5	26.5	0.9
	4	5.5	3.8	10.0	5.9	54.1	8.5	24.5	1.2
	5	5.5	3.8	10.0	5.9	5.1	8.5	24.5	1.2
CAT10	6	5.5	3.8	10.0	5.9	54.1	8.5	24.5	1.2
	8	5.5	3.8	12.0	8.0	7.0	8.5	27.5	1.0
	10	5.5	3.8	15.0	13.0	8.0	8.5	34.0	0.9
	12	5.5	3.8	18.0	18.0	10.0	8.5	39.0	0.9
CAT16	5, 6	6.9	4.4	11.0	5.9	5.1	9.0	27.0	2.0
	8	6.9	4.4	14.0	9.7	8.3	10.0	35.0	1.6
	10, B	6.9	4.4	16.0	12.0	10.0	10.0	39.0	1.5
	12	6.9	4.4	18.0	12.0	10.0	10.0	39.0	1.2
CAT25	5, 6	8.0	5.6	11.5	5.9	5.1	11.0	28.5	2.2
	8	8.0	5.6	14.0	9.7	8.3	13.0	38.0	1.8
	10, B	8.0	5.6	16.0	12.0	10.0	13.0	42.0	1.6
	12	8.0	5.6	18.0	12.0	10.0	13.0	42.0	1.3
CAT35	5, 6, 8	9.5	7.0	13.5	9.7	8.3	13.0	40.0	2.4
	10, B	9.5	7.0	16.0	12.0	10.0	13.0	44.0	2.0
	12	9.5	7.0	18.0	12.0	10.0	13.0	44.0	1.8
CAT50	5, 6, 8	11.0	8.2	15.5	9.7	8.3	14.0	41.0	2.8
	10, B	11.0	8.2	15.5	12.0	10.0	14.0	45.0	2.8
	12	11.0	8.2	18.0	12.0	10.0	14.0	45.0	2.5
CAT70	5, 6, 8	12.1	9.5	17.2	9.7	8.3	18.0	46.0	2.6
	10, 12, B	12.1	9.5	17.2	12.0	10.0	18.0	50.0	2.6
	14, 16	12.1	9.5	17.2	12.0	10.0	18.0	50.0	2.6
CAT95	5, 6, 8	15.0	11.5	21.4	9.7	8.3	18.0	48.0	3.5
	10, 12, B	15.0	11.5	21.4	12.0	10.0	18.0	52.0	3.5
	14, 16	15.0	11.5	21.4	16.5	16.5	18.0	64.0	3.5
CAT120	B, 8, 10, 12	17.0	13.5	24.5	12.0	10.0	24.0	58.0	3.5
	14, 16	17.0	13.5	24.5	16.5	16.5	18.0	64.0	3.5
CAT150	B, 8, 10, 12, 14, 16	19.0	15.0	27.2	16.5	16.5	27.0	75.0	4.0
	20	19.0	15.0	27.2	18.7	14.3	27.0	75.0	4.0
CAT185	B, 8, 10, 12, 14, 16	21.0	16.5	30.0	16.5	16.5	27.0	78.0	4.5
	20	21.0	16.5	30.0	17.0	16.0	27.0	78.0	4.5
CAT240	B, 8, 10, 12, 14, 16	23.0	18.5	33.5	16.5	16.5	30.0	82.0	4.5
	20	23.0	18.5	33.5	17.0	16.0	30.0	82.0	4.5
CAT300	B, 8, 10, 12, 14, 16, 20	26.0	21.0	37.7	18.0	17.0	32.0	88.0	5.0
	20	26.0	21.0	37.7	18.0	17.0	32.0	88.0	5.0
CAT400	B, 10, 12, 14, 16, 20	28.0	23.0	41.0	17.0	17.0	37.0	95.0	5.0
	20	28.0	23.0	41.0	17.0	17.0	37.0	95.0	5.0
CAT500	B, 10, 12, 14, 16, 20	32.0	27.0	47.3	20.0	20.0	38.0	103.0	5.0
	20	32.0	27.0	47.3	20.0	20.0	38.0	103.0	5.0
CAT630	B, 10, 12, 14, 16, 20	36.0	30.0	53.0	20.0	20.0	43.0	105.0	6.0
	20	36.0	30.0	53.0	20.0	20.0	43.0	105.0	6.0
CAT800	B, 10, 12, 14, 16, 20	44.0	33.8	63.0	24.0	24.0	46.0	125.0	10.2
	20	44.0	33.8	63.0	24.0	24.0	46.0	125.0	10.2
CAT1000	B, 10, 12, 14, 16, 20	49.0	38.0	70.0	36.0	36.0	56.0	169.0	11.0
	20	49.0	38.0	70.0	36.0	36.0	56.0	169.0	11.0
CAT1000	B, 10, 12, 14, 16, 20	53.0	42.5	77.0	33.5	33.5	56.0	170.0	10.5
	20	53.0	42.5	77.0	33.5	33.5	56.0	170.0	10.5

NOTE: Series CAT 10 and above have chamfered entry. Series CAT 10 and above can be supplied as Right Angle terminals add suffix B90 The HD range can be supplied without inspection hole making them suitable for soldered joints. 2011V4P1

Disclaimer: The dimensions provided on this spreadsheet are for guidance only and LML Products Ltd reserves the right to change these without prior notification. For any critical applications please contact the sales office to check the latest data. No liability arising from any losses caused by inaccuracy of this data can be accepted by LML Products Ltd.

LML Products Ltd, Calne,  
Wiltshire, SN11 9BN