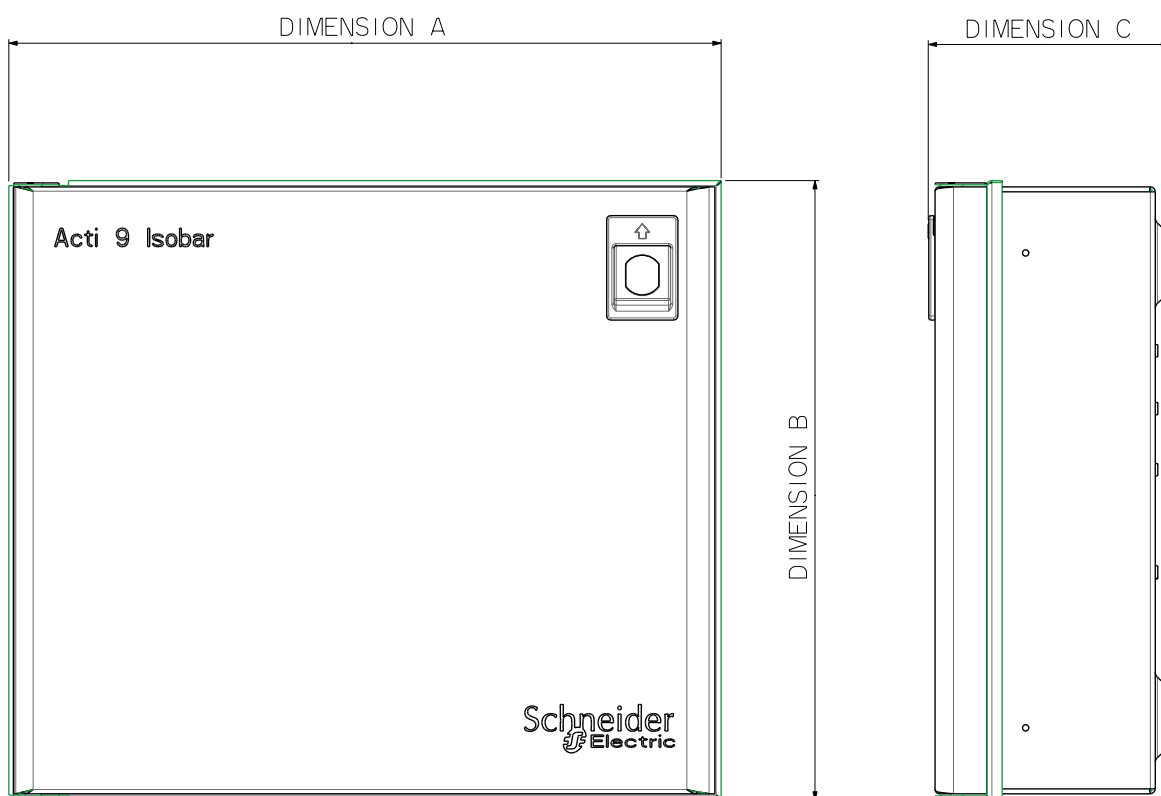


---

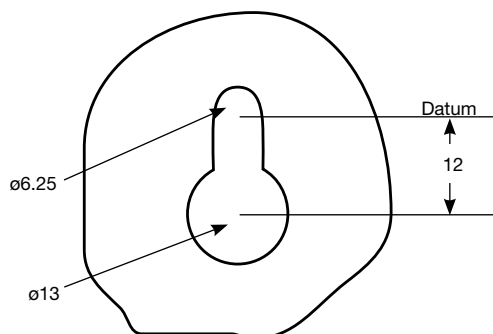
<b>Acti 9 isobar distribution boards</b> .....	<b>pages 12/2 to 12/4</b>
A type .....	page 12/2
B type .....	pages 12/3 to 12/4
<b>Heavy duty distribution board 100A</b> .....	<b>page 12/5</b>
<b>Powerpact 4</b> .....	<b>pages 12/6 to 12/9</b>
Powerboards and panelboards 250A and 400/630A .....	page 12/6
Powerboards and panelboards 250A, 400/630A and 800A .....	page 12/7
Extension boxes .....	page 12/8
Metering extensions .....	page 12/9
<b>Panelboards 1600A</b> .....	<b>page 12/10</b>
<b>Safepact 2</b> .....	<b>page 12/11</b>
<b>MGF fusegear</b> .....	<b>page 12/12</b>
<b>Busbar chamber</b> .....	<b>page 12/13</b>
<b>Powerpact 4 pan assembly and incoming MCCB</b> .....	<b>page 12/14</b>
<b>Outgoing pan assembly 630A only</b> .....	<b>page 12/15</b>
<b>Outgoing pan assembly 800A only</b> .....	<b>page 12/16</b>
<b>Enclosures - Mini Opale, G9</b> .....	<b>page 12/17</b>
<b>Pragma surface mounted enclosures and interfaces</b> .....	<b>page 12/18</b>
<b>Kaedra</b> .....	<b>pages 12/19 to 12/22</b>

## Acti 9 Isobar A type distribution boards

Part number	A	B	C
SEA9AN2	200	300	117
SEA9AN6	273	300	117
SEA9AN10, SEA9AN26DS	345	300	117
SEA9SNI4, SEA9AN26SL, SEA9AN66DS, SEA9AN616MS, SEA9ANI08MS	417	300	117
SEA9ANI8, SEA9AN6S6, SEA9AN5I0SL, SEA9AN96SL, SEA9ANI06DS, SEA9AN624MS, SEA9ANI016MS, SEA9ANI48MS	489	300	117
SEA9AN27, SEA9ANI0SI0, SEA9ANI432MS	417	530	117



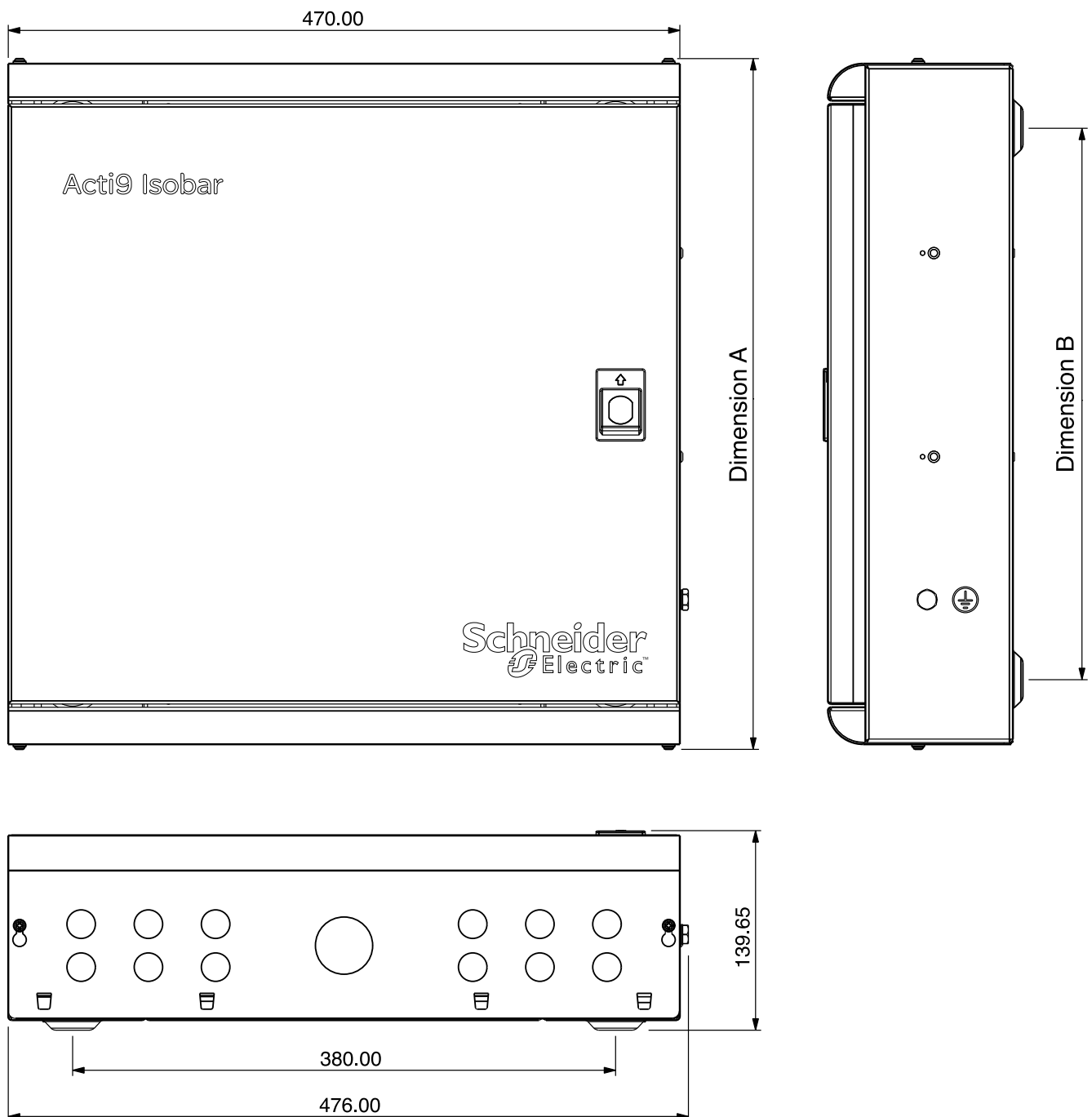
### Key hole slot dimensions

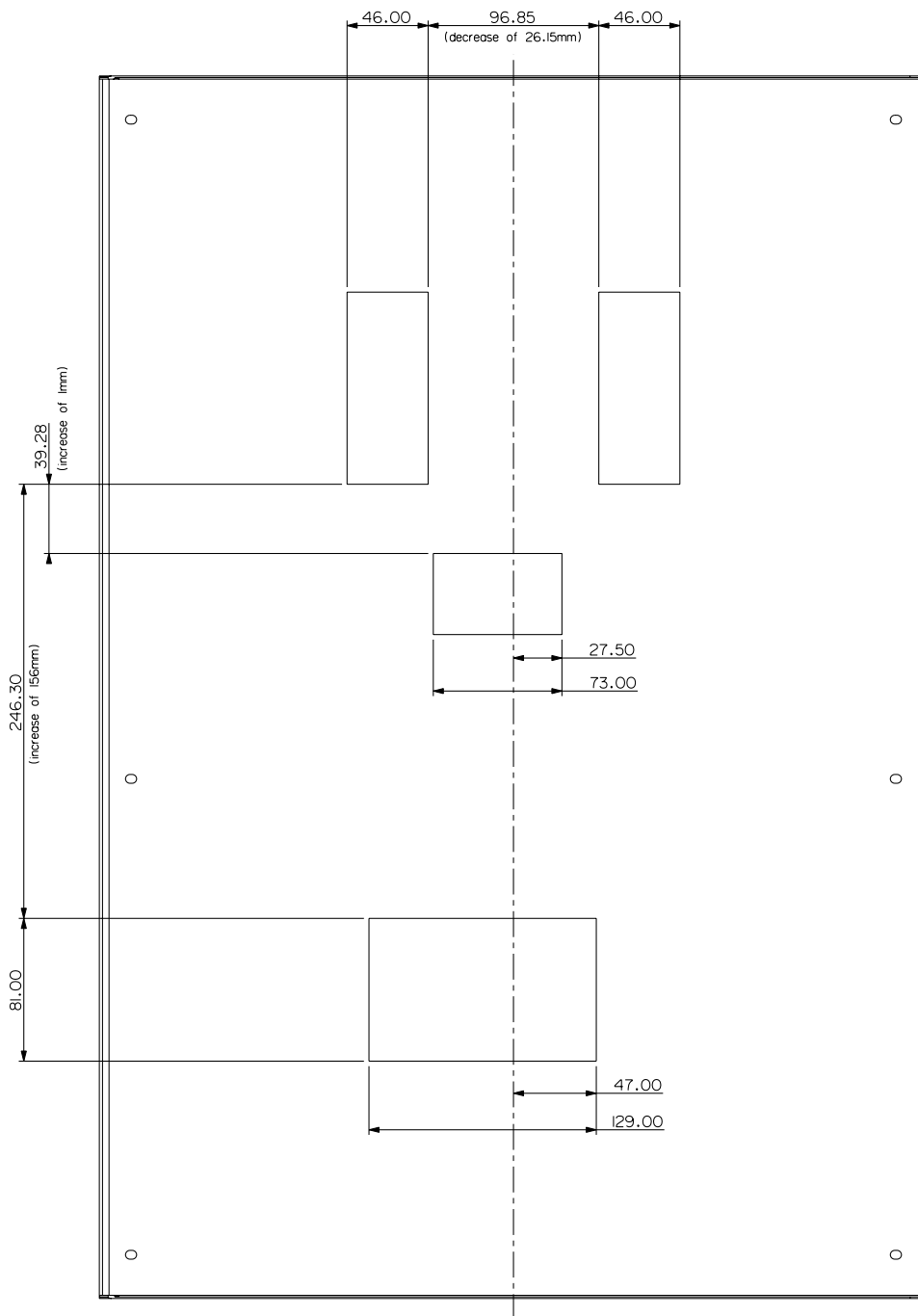


## Dimensions (mm)

## Acti9 Isobar B type distribution boards

Part number	A	B
SEA9BN4,SEA9BN6	484	386
SEA9BN8	538	440
SEA9BN12	700	602
SEA9BN16, MGBN18	862	710
SEA9BN24	1024	872
SEA9BN split metering	1294	1192

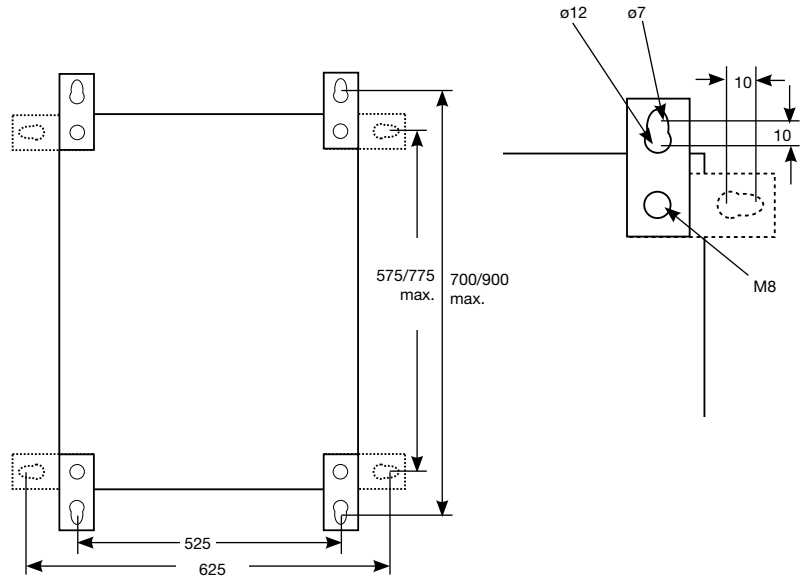




# Heavy duty distribution board (100A) IP55 weatherproof

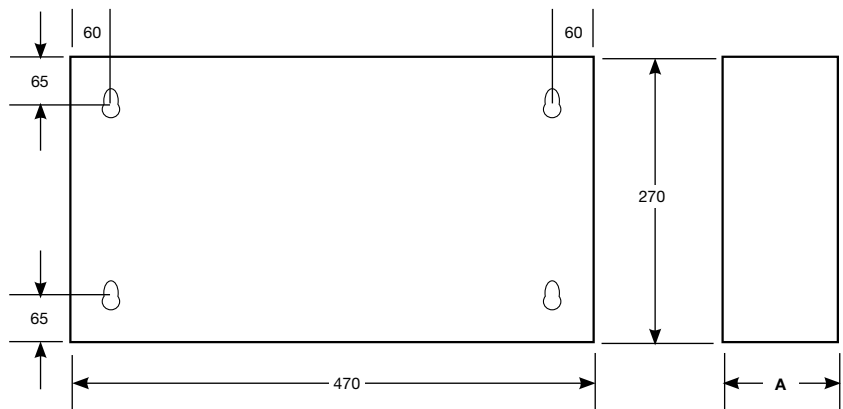
Part number	Number of	Dimensions (mm)		
		Height	Width	Depth
SEA9BN6HDGK/G-R	6	650	600	290*
SEA9BN8HDGK/G-R	8	650	600	290*
SEA9BN12HDGK/G-R	12	850	600	290*
SEA9BN16HDGK/G-R	16	850	600	290*

\* Denotes the maximum depth dimensions with key fitted.



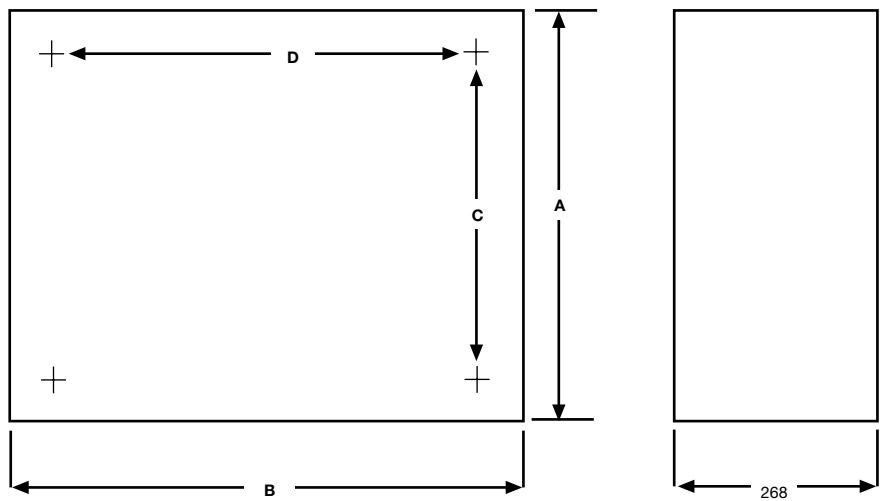
## B board extension box enclosures

Part number	A
SEA9BNEXN	124
SEA9BNEX034N	140
SEA9BNKWH	124
SEA9BNEXA15N	140
SEA9BN100CCI	140
SEA9BNDSI	124



## Powerpact 4 powerboards and panelboards 250A and 400/630A

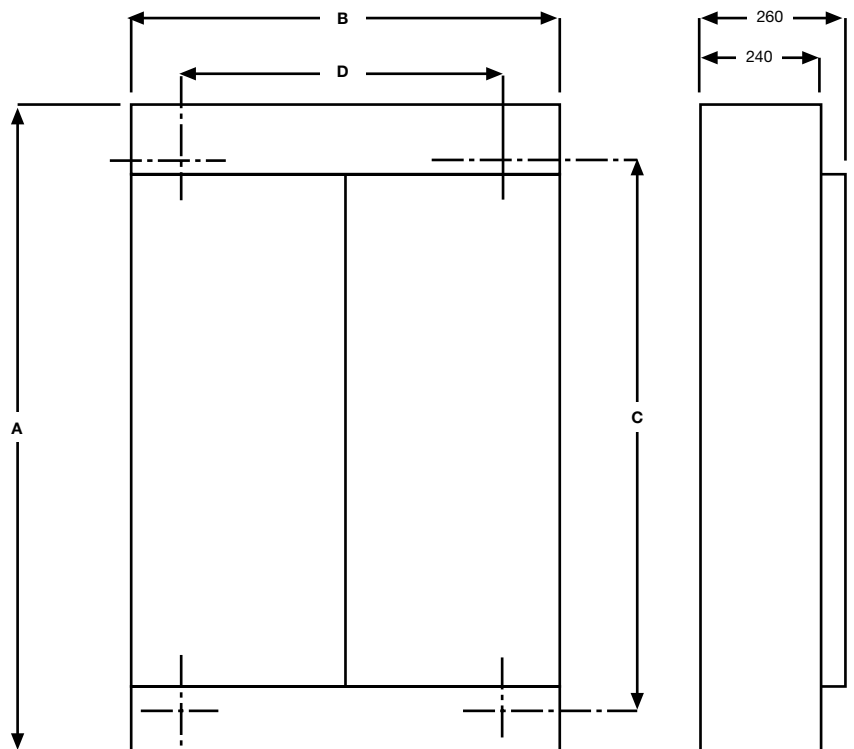
### 250A powerboard



Board ref.	A	B	C	D
<b>MG25C2 &amp; MG25C2M</b>	650	600	442	306
<b>MG25C4 &amp; MG25C4M</b>	650	778	442	484
<b>MG25EXC</b>	650	600	442	306

C and D are the fixing dimensions about the centre line

### 250, 400/630A panelboard



Board ref.	A	B	C	D
<b>MG2C5</b>	679	850	541	670
<b>MG2C7</b>	784	850	646	670
<b>MG2C9</b>	889	850	751	670
<b>MG2C13</b>	1074	850	920	670
<b>MG6C6</b>	1178	850	1035	710
<b>MG6C12</b>	1493	850	1350	710
<b>MG6C18</b>	1808	850	1665	710

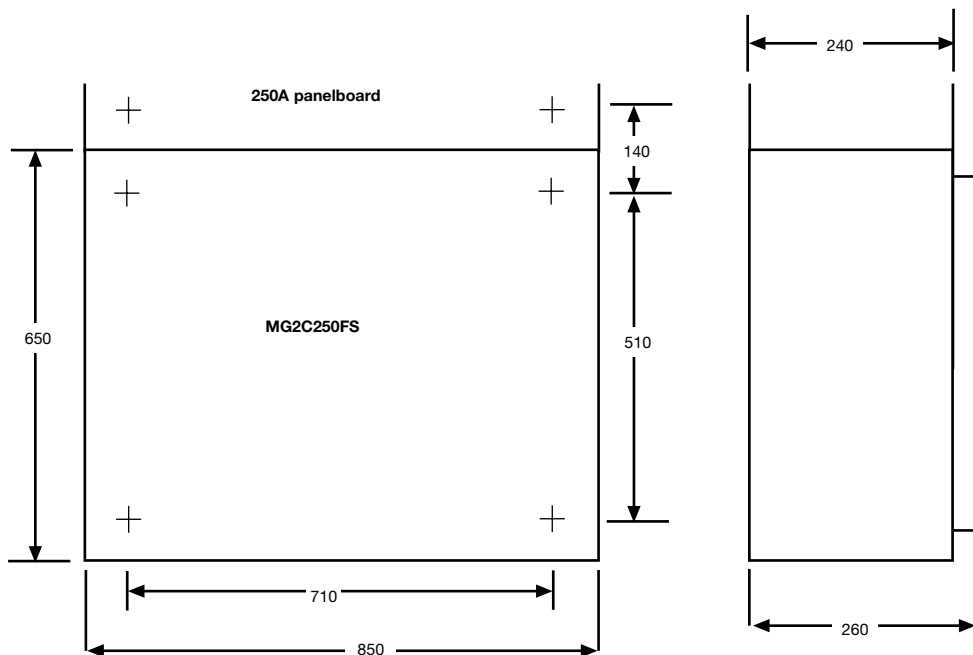
C and D are the fixing dimensions about the centre line

#### Material thickness

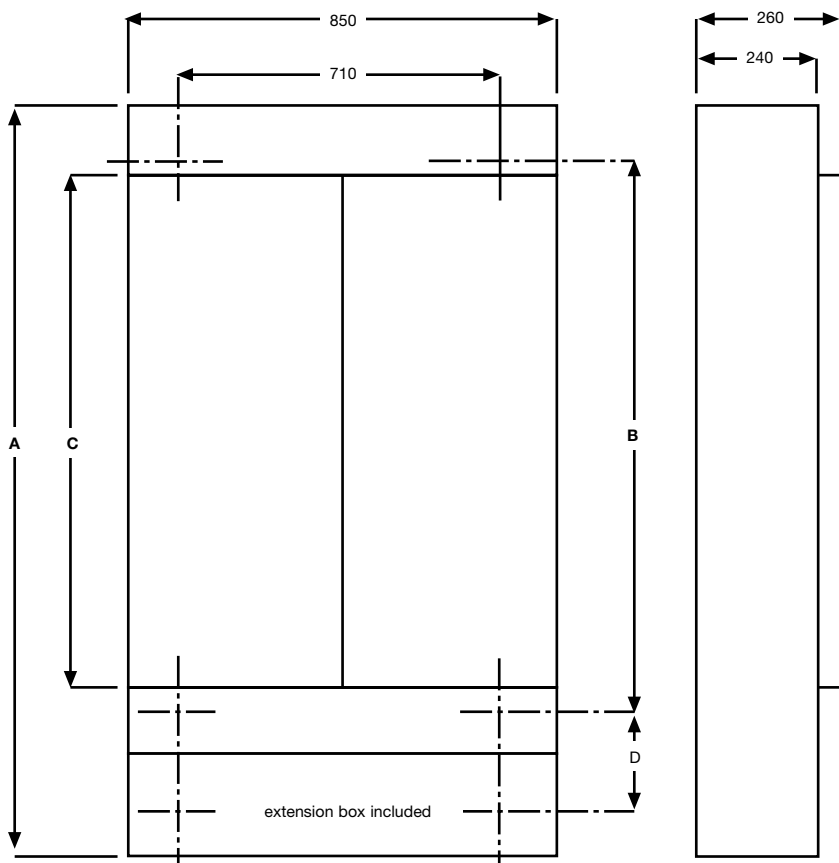
1.2mm cover

1.6mm enclosure

Fuse switch incomer for 250A panelboard

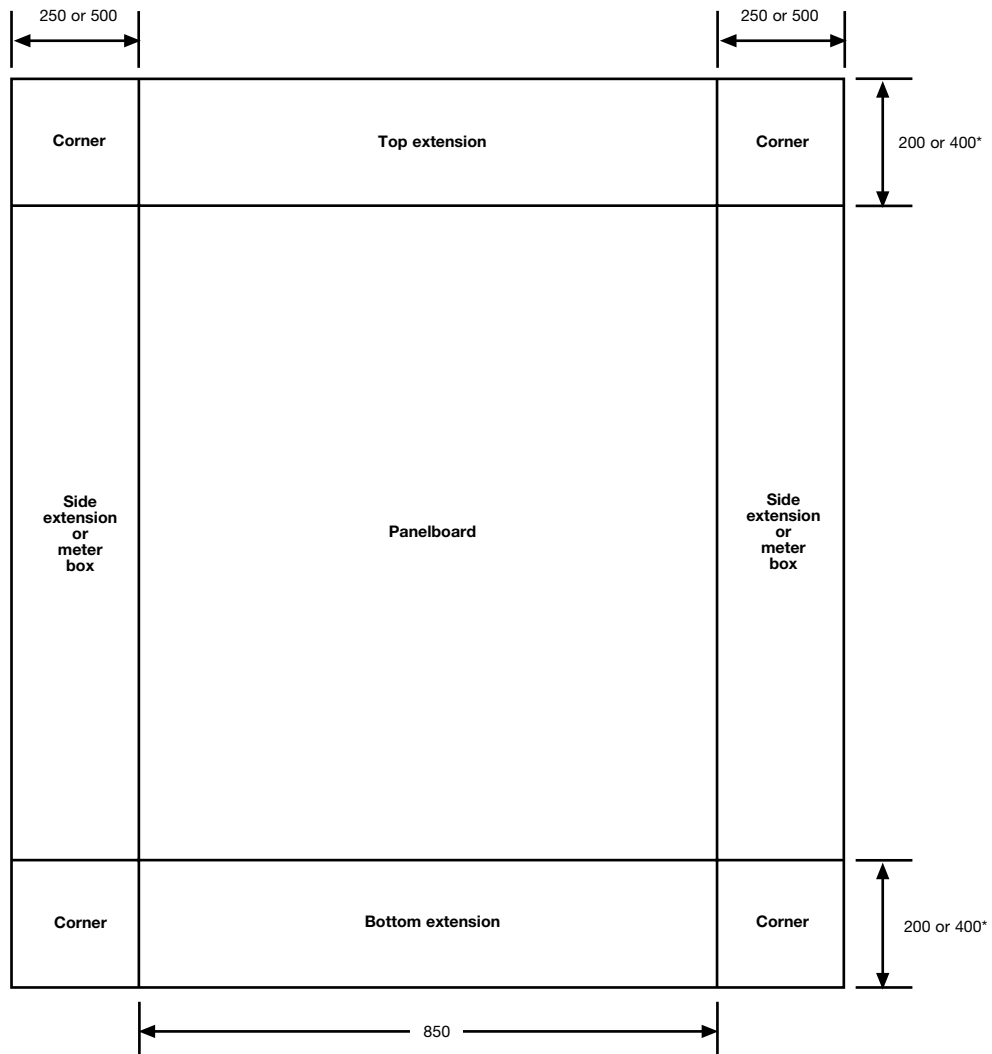


800A panelboard



Board ref.	A	B	C	D
MG8C6	1578	1035	991	172
MG8C12	1893	1350	1306	172
MG8C18	2208	1665	1621	172

**Material thickness**  
1.2mm cover  
1.6mm enclosure



All extension boxes are the same depth as the main board - 240mm.

\* 400mm extension box is fitted as standard at the incoming end of the 800A panelboard.

Corner units are available to suit all combinations of top/bottom and side extension boxes.

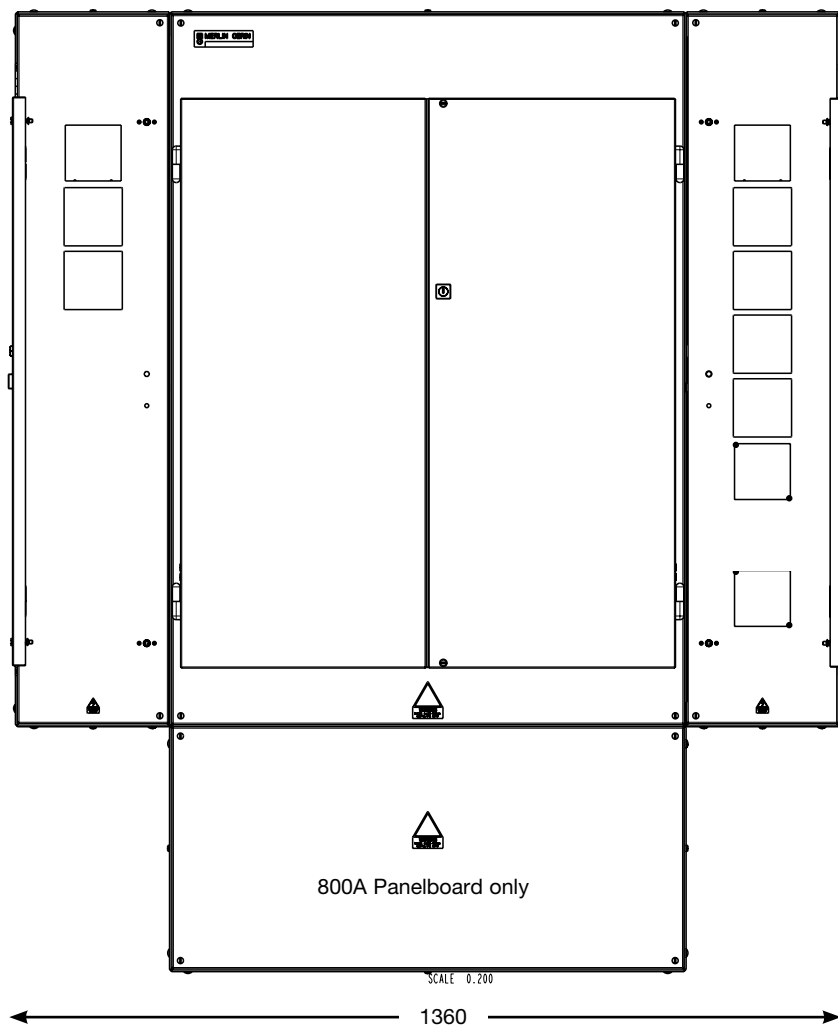
## Overall dimension table

Panelboard Part number	MG25C2	MG25C2M	MG25C4	MG25C4M	MG2C5	MG2C7	MG2C9	MG2C13	MG6C6	MG6C12	MG6C18	MG8C6	MG8C12	MG8C18
<b>Height Standard</b>	653	653	653	653	679	784	889	1074	1178	1493	1808	1583	1898	2213
With 1 top or bottom ext box					883	988	1093	1278	1382	1697	2012	1787	2102	2417
with top & bottom ext box					1087	1192	1297	1482	1586	1901	2216	1991	2306	2621
<b>Width Standard</b>	600	600	778	778	850	850	850	850	850	850	850	850	850	850
with 1-250mm side ext box									1105	1105	1105	1105	1105	1105
with 1-500mm side ext box									1360	1360	1360	1360	1360	1360
with 1-600mm side ext box	1200	1200	1378	1378										
with 1-250 & 1-500mm side ext box								1615	1615	1615	1615	1615	1615	
with 2-250mm side ext boxes									1360	1360	1360	1360	1360	1360
with 2-500mm side ext boxes									1870	1870	1870	1870	1870	1870
<b>Depth</b>	263	263	263	263	263	263	263	263	263	263	263	263	263	263

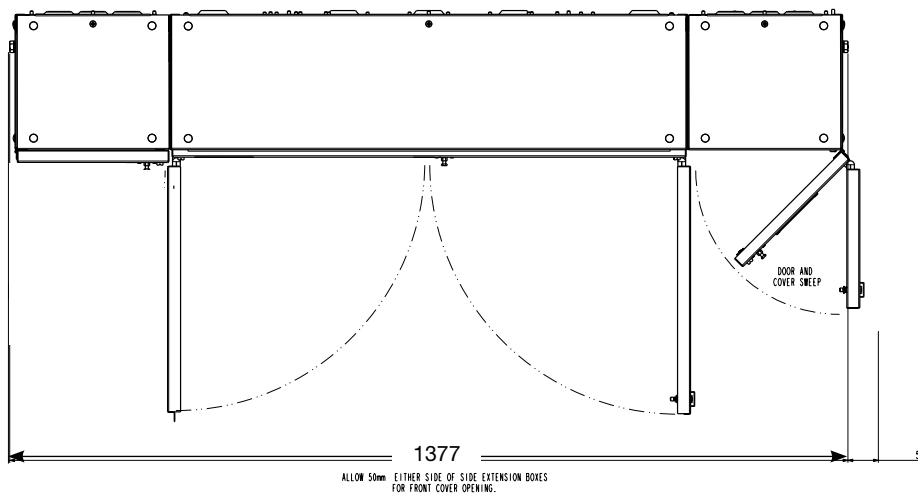


## Dimensions (mm)

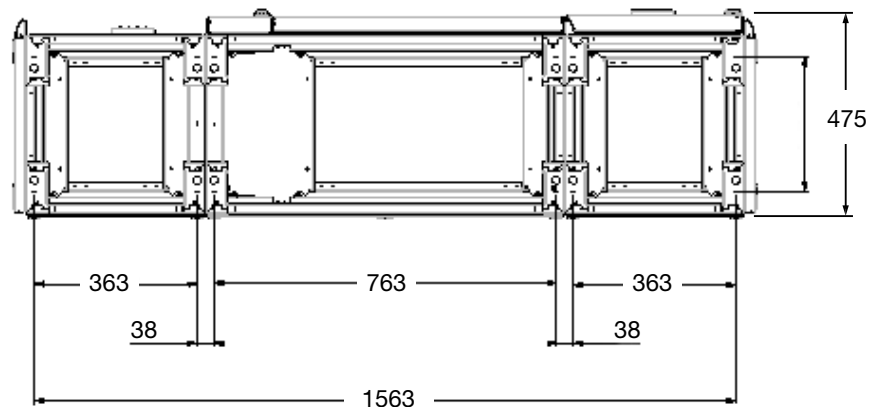
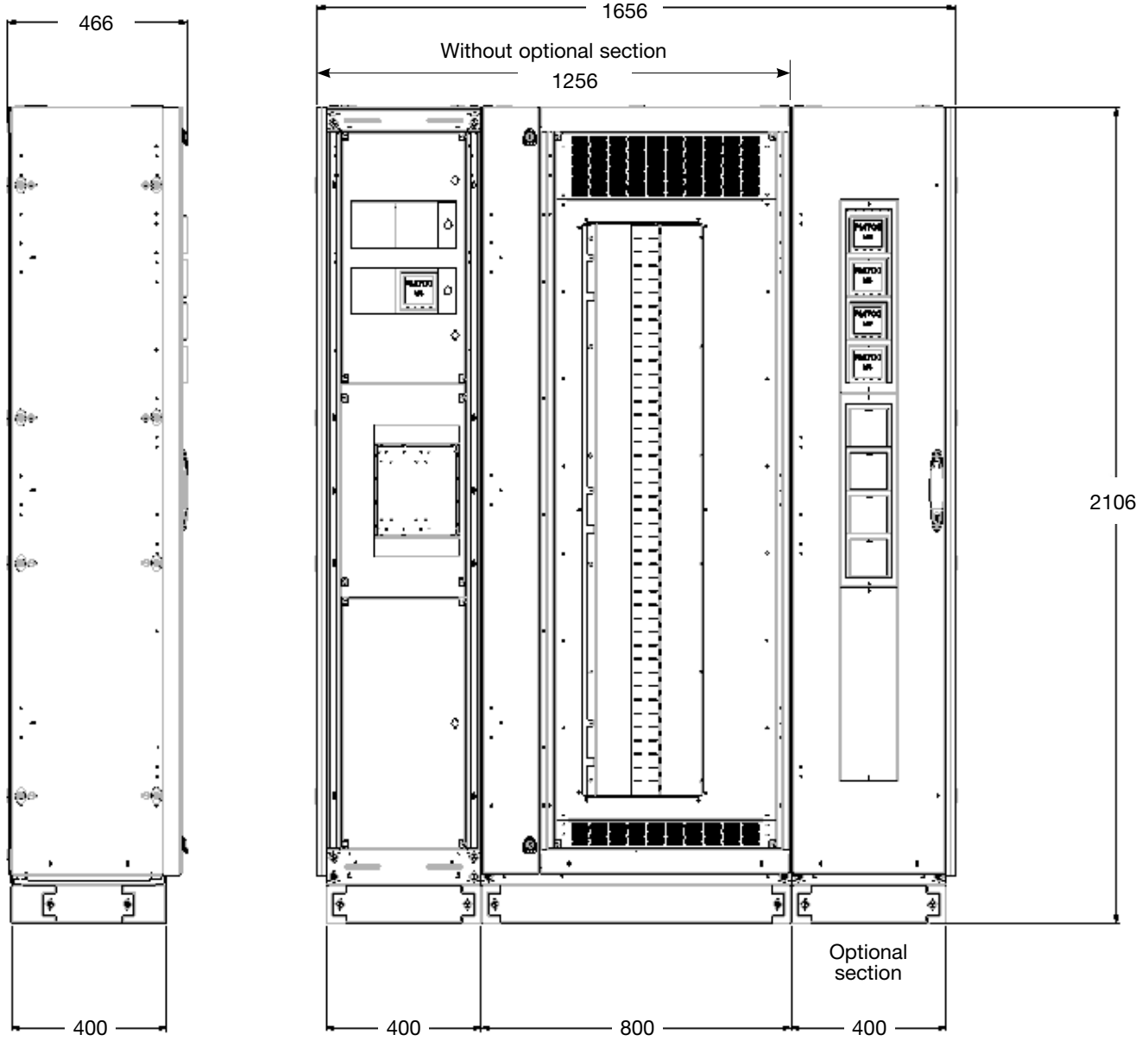
## Powerpact 4 metering extensions 630, 800A panelboard with side extension metering boxes

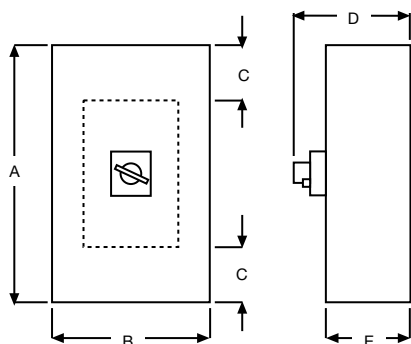


The side extensions with metering are dimensionally the same as standard 250mm side extensions



All apertures are 92mmsq. to accept standard DIN 96 meters.

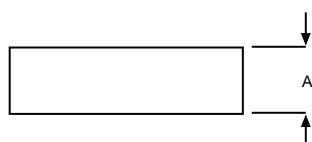




### Safepact 2 MCCB or switch disconnector general purpose enclosure IP40

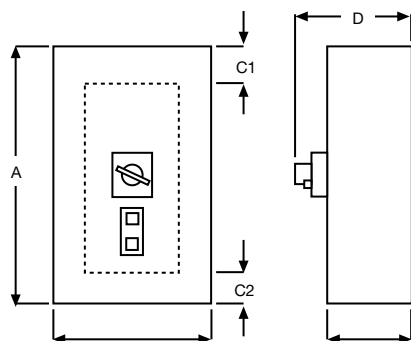
Rating	Height	Width	Cable space	Overall depth	Enclosure depth
	A	B	C	D	E
Up to 250A	420	230	140	211	145
630A	700	356	236	235	169

**Note:** C\* - we recommend fitting cable extension boxes on each end of the 160, 250 and 630A ratings, unless utilising trunking



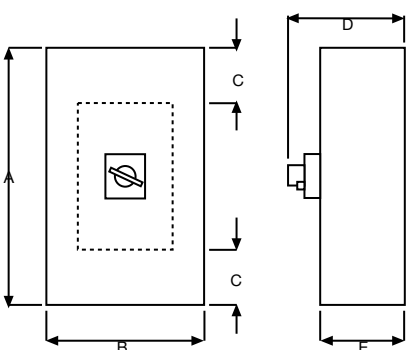
### Extension boxes for Safepact 2 MCCB enclosures

Height (A)	Part number
100	MGEX 160C
200	MGEX 250C
120	MGEX 630C



### Safepact 2 MCCB or switch disconnector general purpose enclosure IP40 including earth leakage

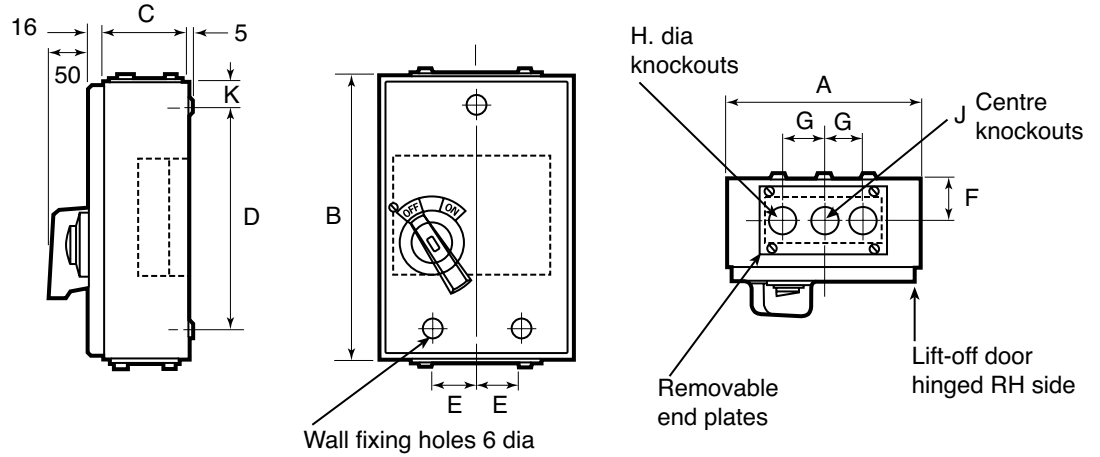
Rating	Height	Width	Cable space		Overall depth	Enclosure depth	
	A	B	C1	C2	D	E	
Up to 100A	100A	420	230	140	65	211	145
	160A	520	230	140	165		
	250A	620	230	140	265		
400A	820	356	236	256	235	169	
630A							



### Enclosed Interpact

Rating	Height	Width	Cable space	Overall depth	Enclosure depth
	A	B	C	D	E
63A	350	350	130	300	250
100A	350	350	125	300	250
160A	350	350	125	300	250
250A	450	350	165	300	250
320A	650	350	235	300	250
400A	650	350	235	300	250
500A	650	350	235	300	250
630A	650	350	235	300	250

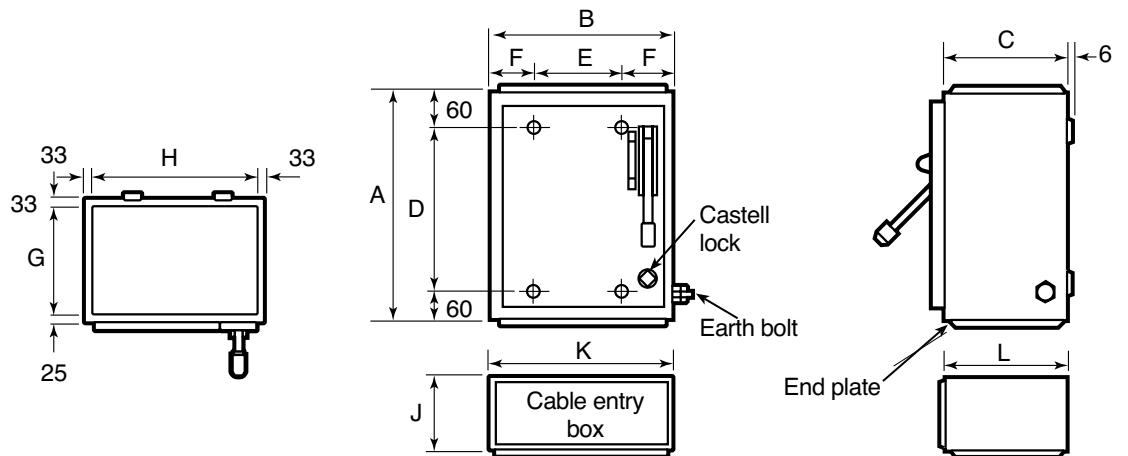
**Switch disconnecter fuse MGFA**  
**Switch disconnecter MGFL**



Rating	A	B	C	D	E	F	G	H	J	Weight Kg*
20A	210	240	105	160	50	51	44	20	25	4.10
32A	210	240	105	160	50	51	44	20	25	4.82
63A	235	350	105	270	55	51	50	32	32	5.34
100A	260	400	120	320	65	51	60	38	40	7.37

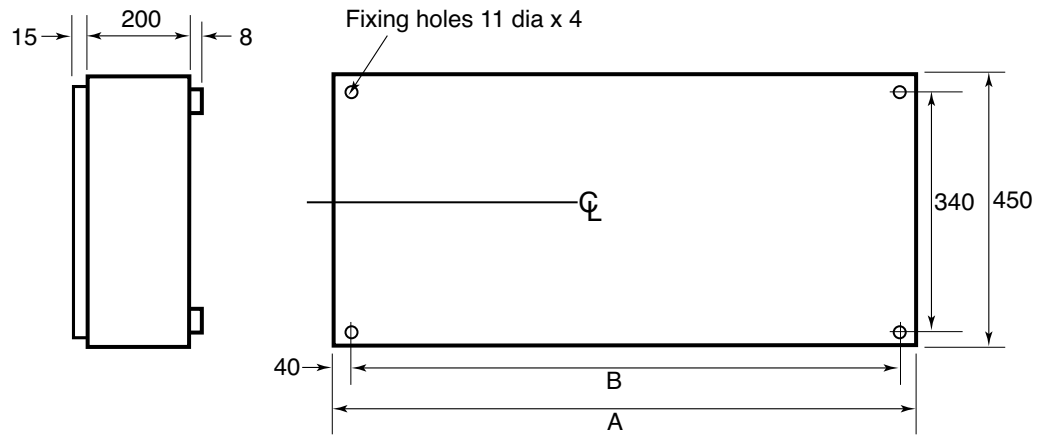
\* Weights do not include the fuse links

**Fuse switch disconnecter MGFS**  
**Switch disconnecter MGFD**



Rating	A	B	C	D	E	F	G	H	J	K	L	Weight Kg*
100A	380	292	200	260	130	81	142	226	100	292	220	15.6
160A	380	292	200	260	130	81	142	226	150	292	220	15.6
200/ 250A	380	340	200	260	180	80	142	274	180	340	220	19.5
400A	455	489	270	335	289	100	212	423	300	489	290	36.2
500A	455	489	270	335	289	100	212	423	300	489	290	36.2
630A	455	489	270	335	289	100	212	423	400	489	290	36.2

\* Weights do not include the fuse links

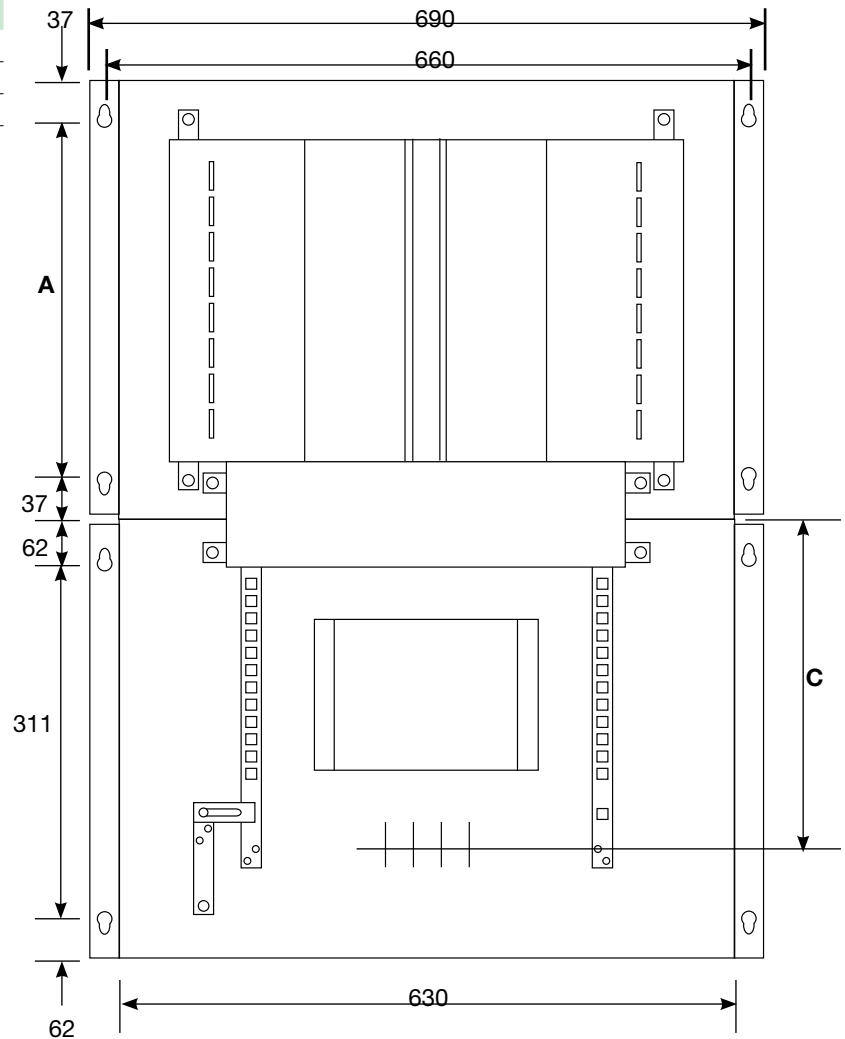


Type	A	B
<b>MBFB...07TN</b>	750	670
<b>MBFB...12TN</b>	1200	1120
<b>MBFB...18TN</b>	1800	1720

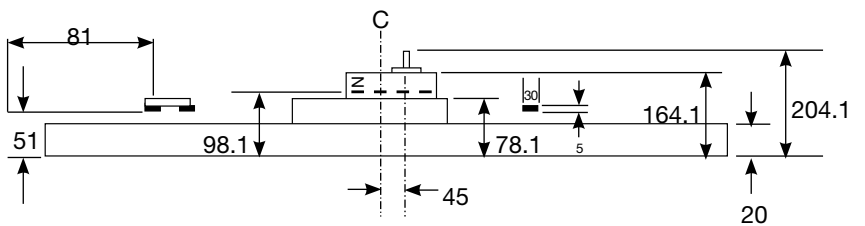
Reference	A
6 way	346
12 way	661
18 way	976
24 way	1291
30 way	1606

Reference	C
NS800	475
NS630	330
NS250	228

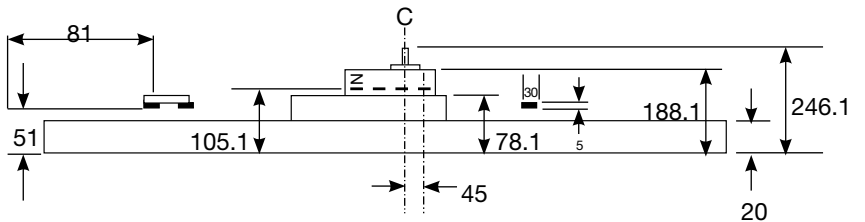
Dimension C = centre line of incoming breaker terminals (plan view).



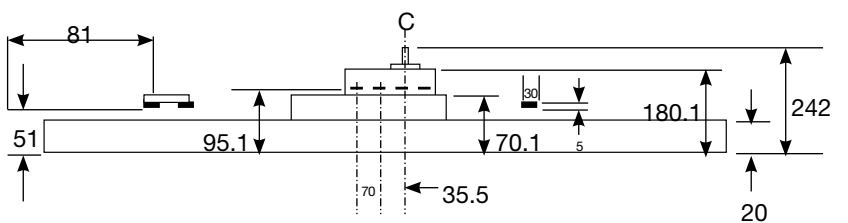
**NS250 incoming MCCB connections**



**NS630 incoming MCCB connections**



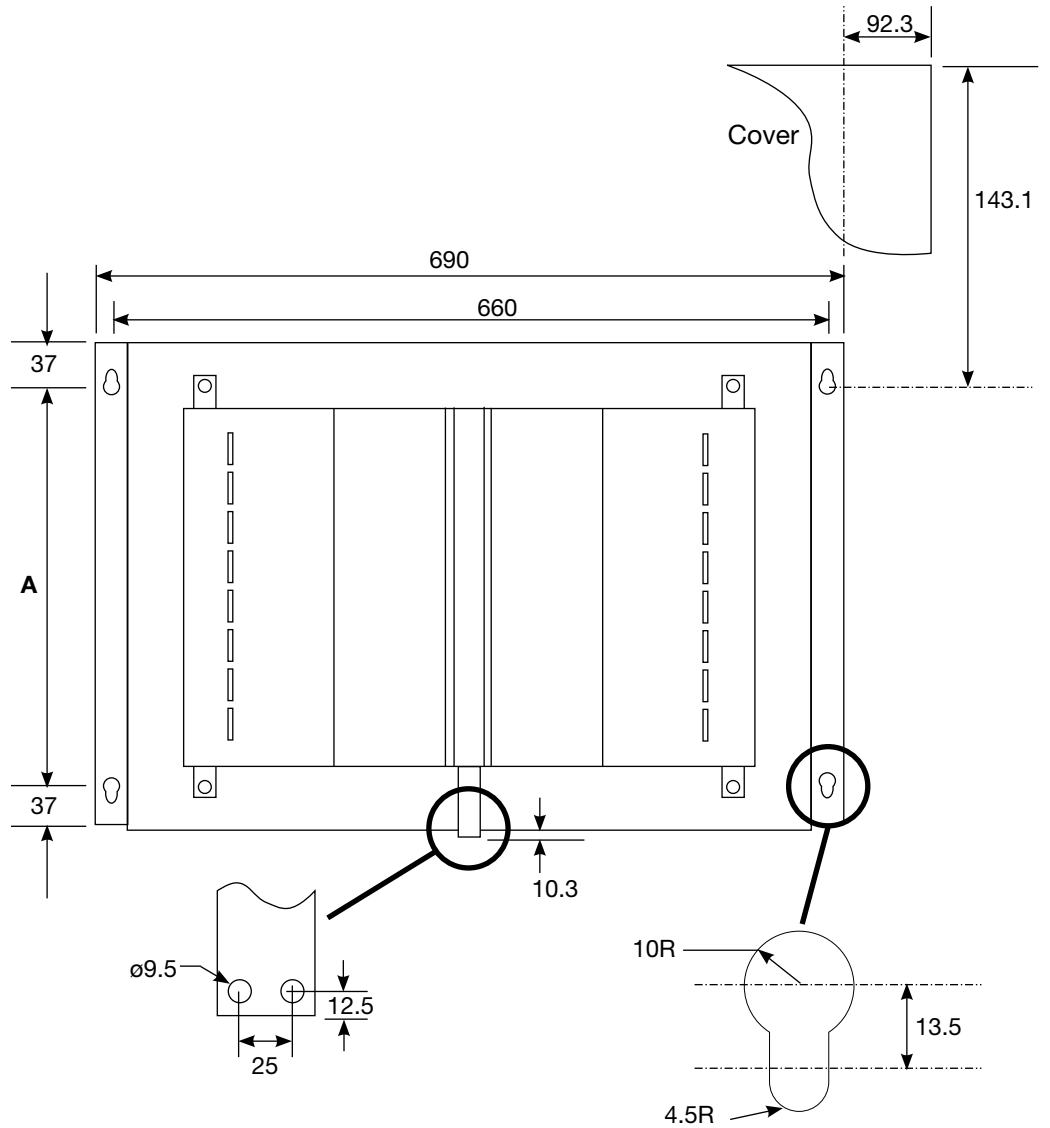
**NS800 incoming MCCB connections**



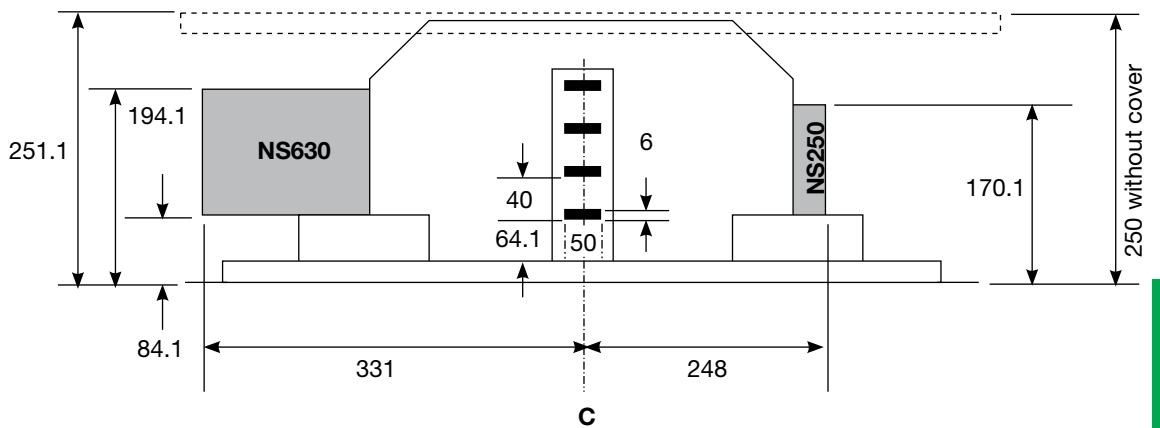
# Dimensions (mm)

# Outgoing pan assembly 630A only

Reference	A
6 way	346
12 way	661
18 way	976
24 way	1291
30 way	1606



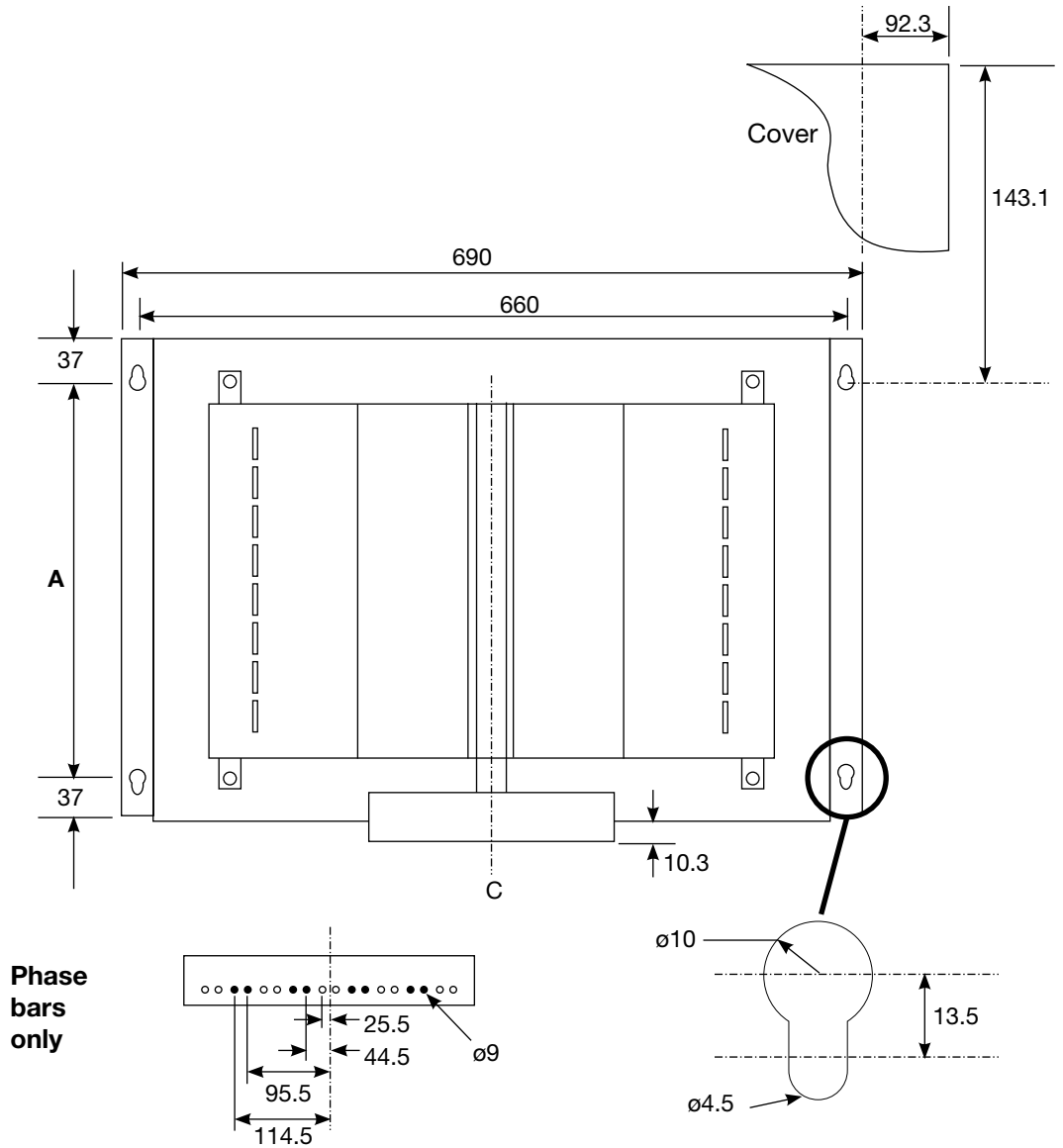
## Incoming busbar connections direct to outgoing pan assembly



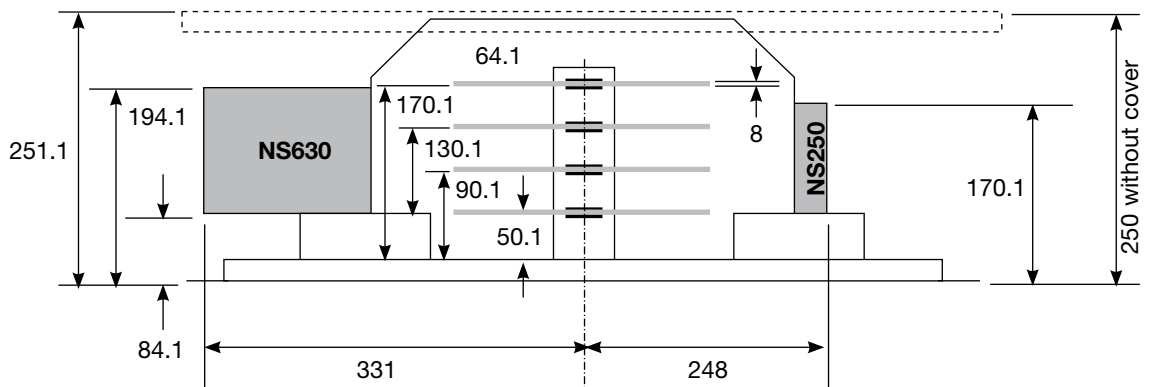
# Dimensions (mm)

# Outgoing pan assembly 800A only

Reference	A
6 way	346
12 way	661
18 way	976
24 way	1291
30 way	1606

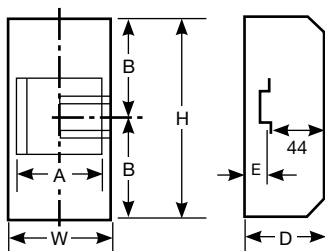


## Incoming busbar connections direct to outgoing pan assembly

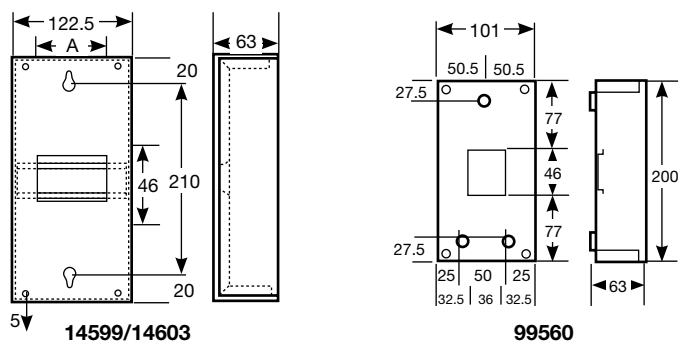




Mini Opale enclosures						
Part number	H	W	D	A	B	E
13392	130	44	57	36	65	11
13394	130	80	57	72	65	11
13396	160	119	65	108	80	19
13398	160	155	65	151	80	19

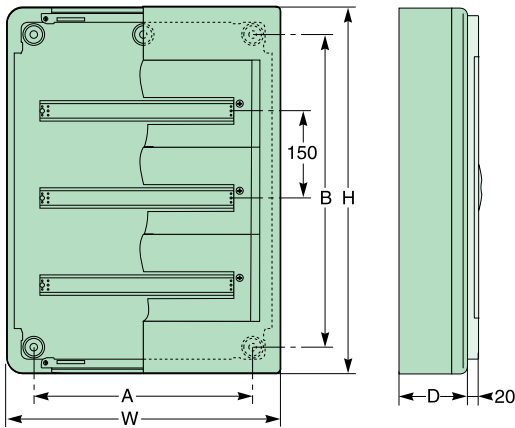


G9 enclosures	
Part number	A
14599	72
14603	99



# Dimensions (mm)

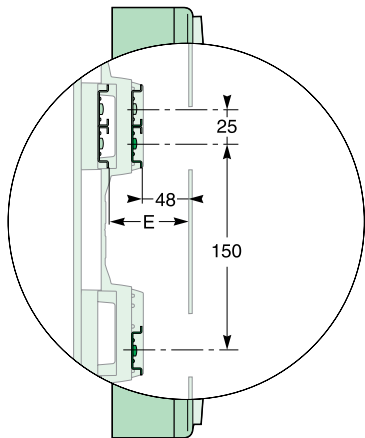
## Enclosures Pragma surface mounted enclosures and interfaces



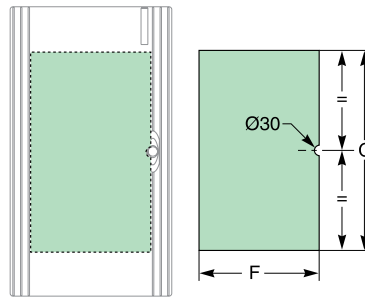
### Surface mounted enclosures

Enclosure		Dimensions (mm)							G	J
		H	W	D	A	B	E	F		
13 modules	1R	300	336	123 (115)	160	200	73	253	149	
	2R	450				350				
	3R	600				500				
	4R	750				650				
24 modules	1R	300	550	148 (136)	340	150	84			121
	2R	450				300				271
	3R	600				450				421
	4R	750				600				571
	5R	900				750				721
	6R	1050				900				871

### Panel for customisation of the transparent door 13 module enclosures

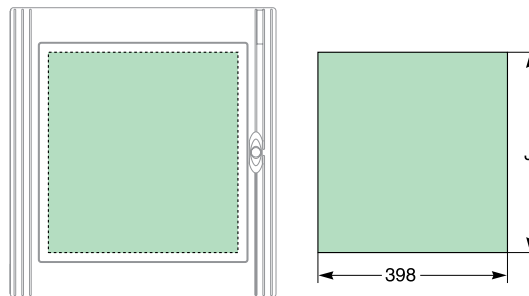


The different positions of the DIN rail in height and depth.



Panel thickness: 0.5 mm max.

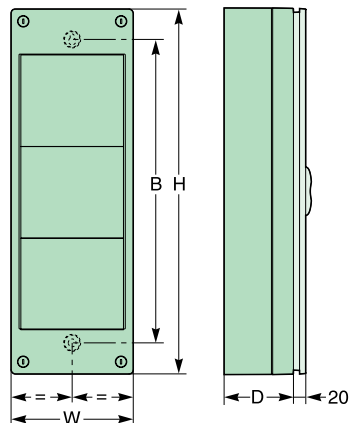
### 24 module enclosures



Panel thickness: 0.5 mm max.

### Interfaces

Enclosure	Associated with enclosure	Dimensions (mm)			
		H	W	D	B
1R	13 modules	300	200	115	206
2R		450			356
3R		600			506
1R	24 modules	300	200	136	175
2R		450			325
3R		600			475



**Pre-cutouts**

The new European standard EN 50262 generalises metric dimensions for cable glands.

To simplify the transition, the entire Kaedra range is equipped with pre-cutouts both in ISO/metric standardisation and in PG standardisation. Each pre-cutout is marked:

- Simple pre-cutout adapted to the metric cable gland:



- Double pre-cutout:

- External: pre-cutout adapted to the metric cable gland/ISO
- Internal: pre-cutout adapted to the PG cable gland



**Cable glands**

Type of pre-cutout	For cables of diameter (mm)
M16	4 - 8
M20	6 - 12
M25	12 - 18
M32	18 - 25
M50	30 - 38
PG11	5 - 10
PG16	10 - 14
PG21	14 - 17
PG29	19 - 26
PG36	22 - 32

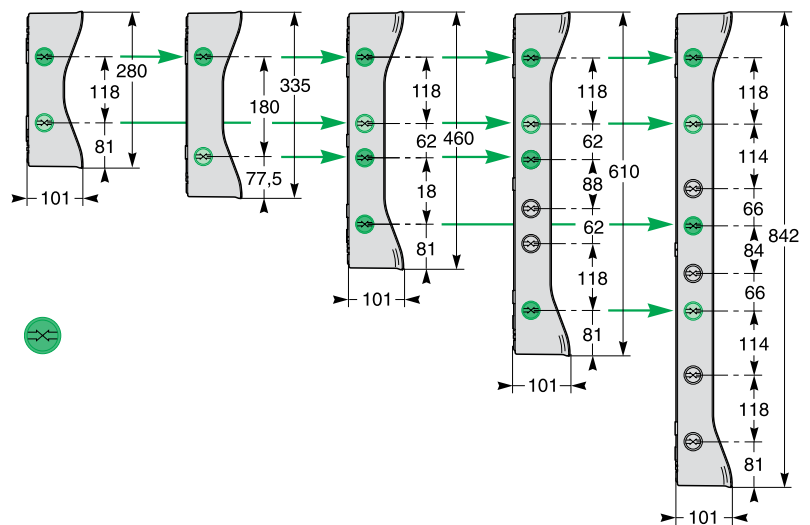
**Associations**

The enclosures can be associated:

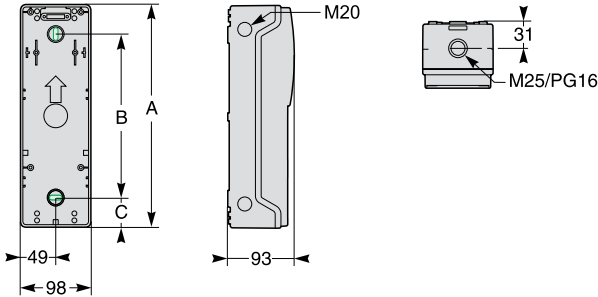
- Horizontally, regardless of their height (see diagram below)
- Vertically, if their width is identical.

Use the association kit, Part number 13934 (2 sleeves + 4 nuts + 4 seals) in the M32 pre-cutouts marked with a double arrow.

Insertion of cables between the enclosures is possible, while preserving the degree of protection IP65.



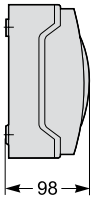
**Weatherproof mini enclosures**  
Weatherproof mini enclosures for power outlets



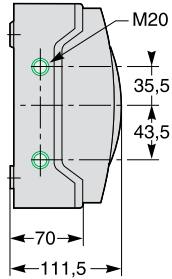
A	B	C	Weight (g)
248	166	41	550
310	228	41	600
392	310	41	700

**Weatherproof mini enclosures for modular switchgear**

3 modules

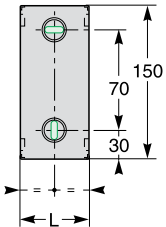


4, 6, 8 and 12 modules

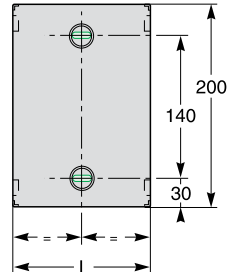


Number of modules	A	L	Weight (g)
3	-	80	300
4	-	123	500
6	-	159	650
8	88	195	850
12	160	267	1050

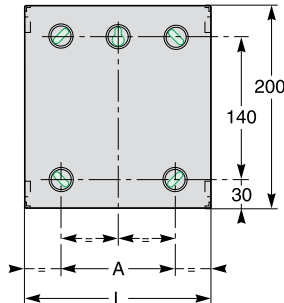
3 modules



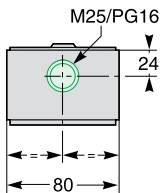
4 and 6 modules



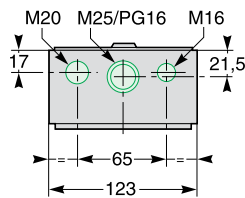
8 and 12 modules



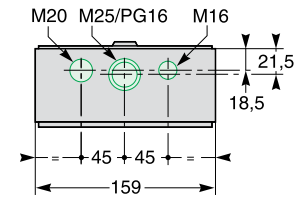
3 modules



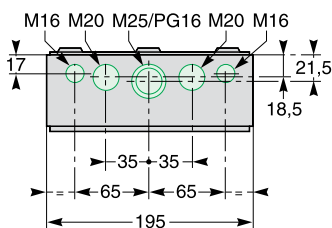
4 modules



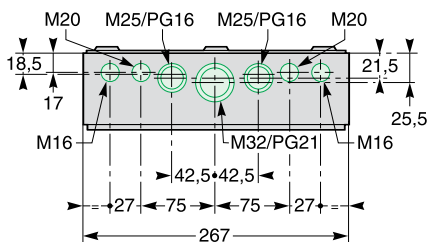
6 modules



8 modules



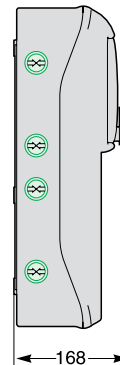
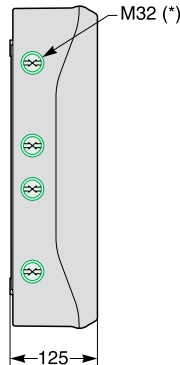
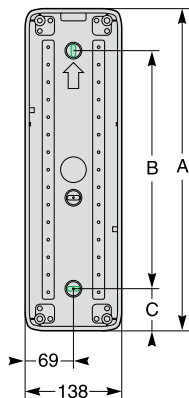
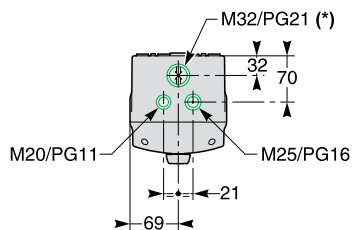
12 modules



A	B	C	Weight (g)
460	251	104.5	1450
460	251	104.5	1250
460	251	104.5	1400
460	251	104.5	1400
610	490	60	1650

## Weatherproof enclosures

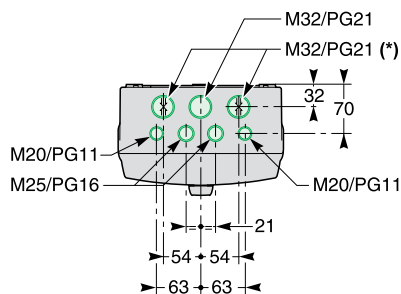
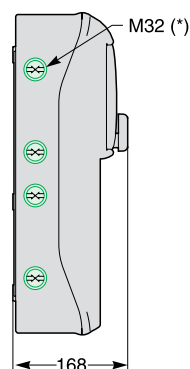
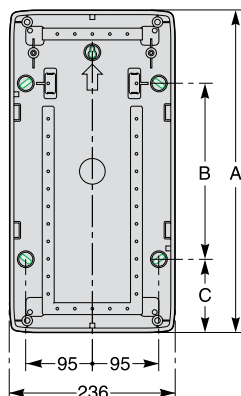
### 5 modules



(\*) pre-punchout also used for enclosure association

A	B	C	Weight (g)
460	251	104.5	2050
460	251	104.5	1900
460	251	104.5	1900

### 8 modules



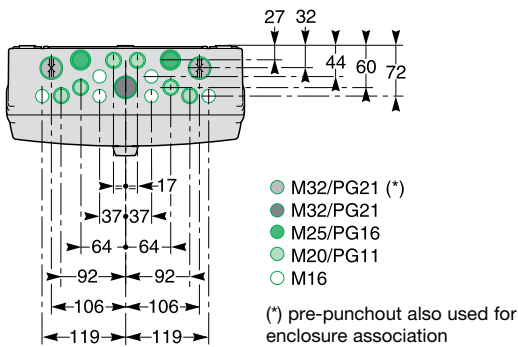
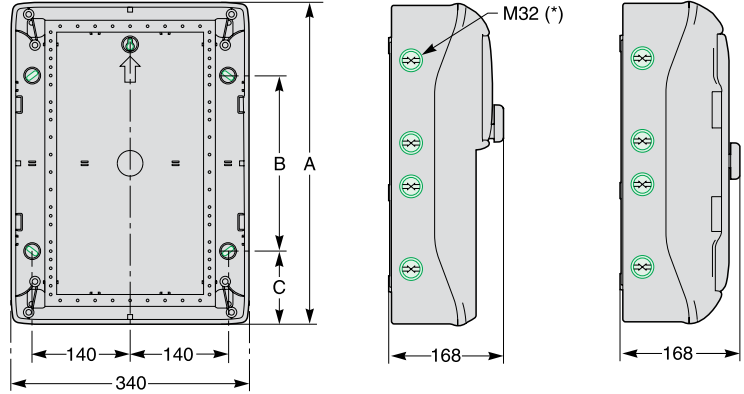
(\*) pre-punchout also used for enclosure association

# Dimensions (mm)

# Kaedra (cont.)

A	B	C	Weight (g)
280	118	81	1900
335	170	82.5	2200
335	170	82.5	2150
460	251	104.5	3100
460	251	104.5	2850
460	251	104.5	3300
460	251	104.5	2650
460	251	104.5	2700
610	401	104.5	4100
460	251	104.5	4550

## Weatherproof enclosures 12-13 modules



A	B	C	Weight (g)
280	118	81	2400
280	118	81	1950
460	251	104.5	3850
460	251	104.5	3550
460	251	104.5	4150
460	251	104.5	3200
460	251	104.5	3150
460	251	104.5	3300
610	401	104.5	3150
610	401	104.5	5600
610	401	104.5	4050
842	633	104.5	6500
842	633	104.5	6600

## 18-19 modules

