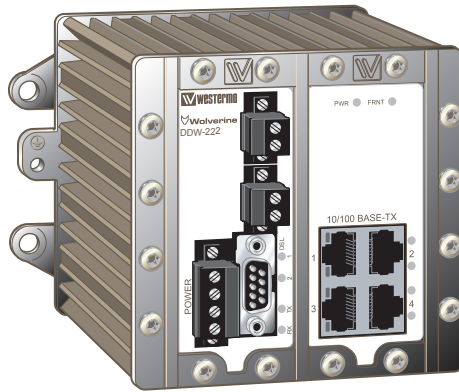


User Guide
6642-22203



DDW-222

WOLVERINE SERIES



 **Wolverine**
*Industrial Ethernet
SHDSL extender*

www.westermo.com

Legal information

The contents of this document are provided "as is". Except as required by applicable law, no warranties of any kind, either express or implied, including, but not limited to, the implied warranties of merchantability and fitness for a particular purpose, are made in relation to the accuracy and reliability or contents of this document. Westermo reserves the right to revise this document or withdraw it at any time without prior notice.

Under no circumstances shall Westermo be responsible for any loss of data or income or any special, incidental, and consequential or indirect damages howsoever caused.

More information about Westermo can be found at the following Internet address:

<http://www.westermo.com>

Safety



Before installation:

Read this manual completely and gather all information on the unit. Make sure that you understand it fully. Check that your application does not exceed the safe operating specifications for this unit.

This unit should only be installed by qualified personnel.

This unit should be built-in to an apparatus cabinet, or similar, where access is restricted to service personnel only.

The power supply wiring must be sufficiently fused, and if necessary it must be possible to disconnect manually from the power supply. Ensure compliance to national installation regulations.

This unit uses convection cooling. To avoid obstructing the airflow around the unit, follow the spacing recommendations (see Cooling section).



Before mounting, using or removing this unit:

Prevent access to hazardous voltage by disconnecting the unit from power supply. Warning! Do not open connected unit. Hazardous voltage may occur within this unit when connected to power supply.

Care recommendations

Follow the care recommendations below to maintain full operation of unit and to fulfil the warranty obligations.

This unit must not be operating with removed covers or lids.

Do not attempt to disassemble the unit. There are no user serviceable parts inside.

Do not drop, knock or shake the unit, rough handling above the specification may cause damage to internal circuit boards.

Do not use harsh chemicals, cleaning solvents or strong detergents to clean the unit.

Do not paint the unit. Paint can clog the unit and prevent proper operation.

Do not expose the unit to any kind of liquids (rain, beverages, etc). The unit is not waterproof. Keep the unit within the specified humidity levels.

Do not use or store the unit in dusty, dirty areas, connectors as well as other mechanical part may be damaged.

If the unit is not working properly, contact the place of purchase, nearest Westermo distributor office or Westermo Tech support.

A readily accessible disconnect device shall be incorporated external to the equipment.

This unit may have hot surfaces when used in high ambient temperature.

WARNING – SUBSTITUTION OF COMPONENTS MAY IMPAIR SUITABILITY FOR DIVISION 2.

WARNING – DO NOT OPEN WHEN ENERGIZED.

WARNING – DO NOT DISCONNECT EQUIPMENT UNLESS AREA IS KNOWN TO BE NON-HAZARDOUS.

AVERTISSEMENT – RISQUE D'EXPLOSION. NE PAS DÉBRANCHER TANT QUE LE CIRCUIT EST SOUS TENSION, À MOINS QU'IL NE S'AGISSE D'UN EMPLACEMENT NON DANGEREUX.

SPECIAL CONDITION OF USE:

This equipment shall be installed in compliance with the enclosure, mounting, spacing, and segregation requirements of the ultimate application, including a tool removable cover.

Maintenance

No maintenance is required, as long as the unit is used as intended within the specified conditions.



ATEX Information

General

This unit is intended to be used in Zone 2 hazardous location only.


Marking

 II 3G

Ex nA IIC T4 Gc

SPECIAL CONDITION

WARNING – DO NOT SEPARATE WHEN ENERGIZED

	Indicate that this unit complies with relevant European standards that are harmonised with the 94/9/EC Directive (ATEX).
II	Equipment group II. This unit can be installed in all places with an explosive gas atmosphere other than mines susceptible to firedamp.
3	Equipment category 3. A category is the classification according to the required level of protection. This unit ensures the requisite level of protection during normal operation and is intended for use in areas in which explosive atmosphere caused by gases, vapours, mists, or dust mixtures are unlikely to occur or, if they do occur, are likely to do so only infrequently and for a short period only.
G	Indicates protection concerning explosive atmospheres caused by gases, vapours or mists (G).
Ex	Indicates that this unit is in conformity with relevant European Ex standard(s).
nA	The type of protection used. This unit is a non-sparking device "nA" which is constructed to minimize the risk of occurrence of arcs or sparks capable of creating an ignition hazard during conditions of normal operation.
IIC	Gas group, a typical gas is hydrogen.
T4	Temperature class T4 (T4 = 135°C). This unit is classified in accordance with its maximum surface temperature (external and internal).
Gc	Equipment protection level Gc (EPL Gc) Equipment for explosive gas atmospheres, having a "enhanced" level of protection, which is not a source of ignition in normal operation and which may have some additional protection to ensure that it remains inactive as an ignition source in the case of regular expected occurrences. EPL Gc are analogous to the ATEX Categories (Category 3 G = EPL Gc).
SPECIAL CONDITION	This unit has a special condition for safe use. The special condition for safe use contains safety related information that is necessary for the correct installation and safe use.

Special condition for use

Ambient temperature:

This unit is designed for use in extreme ambient temperature conditions according to the following: $-40\text{ °C} \leq T_{\text{amb}} \leq +70\text{ °C}$

Installation in an apparatus cabinet:

This unit requires installation in an Ex certified apparatus cabinet suitable for the area of use and providing a degree of protection of at least IP54.

Resistance to impact:

This unit requires installation in an apparatus cabinet where adequate resistance to impact is provided by the apparatus cabinet.

See "Installation in an apparatus cabinet" above for requirements on the external apparatus cabinet.

Resistance to light:

This unit requires installation in an apparatus cabinet where it is protected from light (for example daylight or light from luminaires).

See "Installation in an apparatus cabinet" above for requirements on the external apparatus cabinet.

Transient protection:

This unit requires external transient protection at the power supply terminals to be set at a level not exceeding 67 VDC.

Secureness of plugs:

When this unit is installed in an explosive atmospheres, all connectors must be mechanically secured to prevent loosening.

Conductor temperature:

When this unit is installed in locations with high ambient temperature, special precautions shall be taken upon the choice of external conductor(s) and the temperature rating of the conductor(s).

Directive 94/9/EC alongside with other directives:

Directive 2004/108/EC (EMC) applies and to assure a safe performance of this unit under the scope of Directive 94/9/EC, refer to the electromagnetic immunity level specified under "Type tests and environmental conditions" in this manual.

Warning marking:

When this unit is installed in an explosive atmospheres, the warning label submitted together with this unit shall be attached on the unit and visible to the end user.

Standards and date of compliance

EN 60079-0 and EN 60079-15
2011-03-24

Ratings

Power	(20 – 48) VDC; 300 mA
Ambient temperature	-40°C ≤ Ta ≤ +70°C
Ingress protection (IP)	IP40
Maximum surface temperature	135°C (temperatur class T4)

Safety Control Drawing

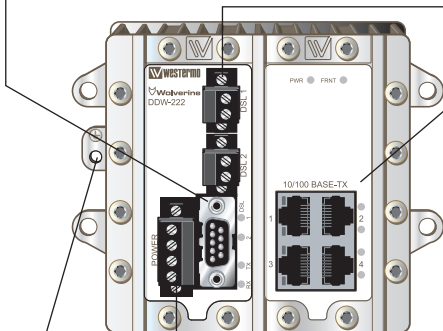
Degree of protection	IP40
Ambient temperature	-40°C to +70°C
Installation spacing	Minimum 25 mm above / below Minimum 10 mm left / right

Direction relative this unit!

Pos.	Direction/ description	Input/Output values
1	Not connected (DCD)	$U_{max} = \pm 12 \text{ Vpk}$ $I_{max} = \pm 60 \text{ mA}$ Data rate: 0.3 – 115.2 kbit/s
2	In/Received Data (RD)	
3	Out/Transmitted Data (TD)	
4	Out/Data Terminal Ready (DTR)	
5	-/Signal Ground (SG)	
6	In/Data Set Ready (DSR)	
7	Out/Request To Send (RTS)	
8	In/Clear To Send (CTS)	
9	Not connected (RI)	

Position	Direction*/ description	Input/Output values
1	In/Out / SHDSL	$U = \pm 5 \text{ Vpk}$ $I = \pm 25 \text{ mA}$ Data rate up to 15.3 Mbit/s
2	In/Out / SHDSL	

* Galvanically isolated via signal transformer and capacitively isolated to signal ground through a 1.5 kV 220 pF capacitor.
See user manual for proven transient protection.

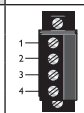


M5 threaded hole for PE connection.

Position	Direction*/ description	Input/Output values
1	In/Out / TD+	$U = \pm 1 \text{ V} (4\mu\text{V/s})$ $I = \pm 20 \text{ mA}$ Data rate: 10/100 Mbit/s
2	In/Out / TD-	
3	In/Out / RD+	
4	Not connected	
5	Not connected	
6	In/Out / RD-	
7	Not connected	
8	Not connected	

* Galvanically isolated via signal transformers and capacitively isolated to signal ground through a 2 kV 1000 pF capacitor.
See user manual for proven transient protection.

Position	Direction*/ description	Input values
1	In / +Voltage A	$U_{in} = (10 - 60) \text{ VDC}$ $I_{in} = 420 \text{ mA @ } 16 \text{ VDC}$ $P_{in} = \text{Max } 7 \text{ W}$
2	In / +Voltage B	
3	In / Common	
4	In / Common	



* See section *Type tests and environmental conditions* in this user manual for proven transient protection.

Agency approvals and standards compliance

Type	Approved Agency/ W-mo	Approval / Compliance
EMC	W-mo	EN 61000-6-2, Immunity industrial environments
	W-mo	EN 55024, Immunity IT equipment
	W-mo	EN 61000-6-4, Emission industrial environments
	W-mo	FCC part 15 Class A
	W-mo	EN 50121-4, Railway signalling and telecommunications apparatus
Safety	W-mo	EN 60950-1, IT equipment
SHDSL	NEMKO	ITU-T G.991.2
Ex	FM Approvals	Class I, Division 2
	W-mo	EN 60079-0 and EN 60079-15

FCC Part 15.105 Notice:

This equipment has been tested and found to comply with the limits for a Class A digital device, pursuant to Part 15 of the FCC Rules. These limits are designed to provide reasonable protection against harmful interference when the equipment is operated in a commercial environment. This equipment generates, uses, and can radiate radio frequency energy and, if not installed and used in accordance with the instruction manual, may cause harmful interference to radio communications. Operation of this equipment in a residential area is likely to cause harmful interference in which case the user will be required to correct the interference at his own expense.

Warning

This is a class A product. In a domestic environment this product may cause radio interference in which case the user may be required to take adequate measures.

Declaration of Conformity



Westermo Teleindustri AB

Declaration of conformity

The manufacturer Westermo Teleindustri AB
SE-640 40 Stora Sundby, Sweden

Herewith declares that the product(s)

Type of product	Model	Art no
Industrial Ethernet SHDSL extender	Wolverine DDW-22x series	3642-0200, 3642-0220, 3642-0240, 3642-0250


is in conformity with the following EC directive(s).

No	Short name
2004/108/EC	Electromagnetic Compatibility (EMC)
94/9/EC	Equipment Explosive Atmospheres (ATEX)

References of standards applied for this EC declaration of conformity.

No	Title	Issue
EN 61000-6-1	Electromagnetic compatibility – Immunity for residential environments	2007
EN 61000-6-2	Electromagnetic compatibility – Immunity for industrial environments	2005
EN 61000-6-3 ¹	Electromagnetic compatibility – Emission for residential environments	2007
EN 61000-6-4	Electromagnetic compatibility – Emission for industrial environments	2007
EN 55024	Information technology equipment - Immunity	1998 + A1:2001 + A2:2003
EN 55022	Information technology equipment – Radio disturbance characteristics – Limits and methods of measurement	2006 + A1:2007
EN 50121-4	Railway applications – Electromagnetic compatibility – Emission and immunity of the signalling and telecommunications apparatus	2006
EN 60079-0	Explosive atmospheres Equipment – General requirements	2009
EN 60079-15	Electrical apparatus for explosive gas atmospheres – Construction, test and marking of type of protection “n” electrical apparatus	2005

The last two digits of the year in which the CE marking was affixed: 11


Signature

Pierre Öberg
Technical Manager
25 March 2011

¹ Only applicable for article no. 3642-0250.

Postaddress/Postal address
S-640 40 Stora Sundby
Sweden

Tel.
016-428000
Int+46 16428000

Telefax
016-428001
Int+46 16428001

Postgiro
52 72 79-4

Bankgiro
5671-5550

Org.nr/
Corp. identity number
556361-2604

Registered office
Eskilstuna

Type tests and environmental conditions

Phenomena	Test	Description	Test levels
ESD	EN 61000-4-2	Enclosure contact	± 6 kV
		Enclosure air	± 8 kV
RF field AM modulated	IEC 61000-4-3	Enclosure	20 V/m 80% AM (1 kHz), 80 – 1000 MHz 10 V/m 80% AM (1 kHz), 1400 – 2100 MHz 5 V/m 80% AM (1 kHz), 2100 – 2500 MHz 1 V/m 80% AM (1 kHz), 2500 – 2700 MHz
Fast transient	EN 61000-4-4	Signal ports	± 2 kV
		Power ports	± 2 kV
Surge	EN 61000-4-5	Signal ports balanced	± 2 kV line to earth, ± 1 kV line to line
		Power ports	± 2 kV line to earth, ± 2 kV line to line
RF conducted	EN 61000-4-6	Signal ports	10 V 80% AM (1 kHz), 0.15 – 80 MHz
		Power ports	10 V 80% AM (1 kHz), 0.15 – 80 MHz
Power frequency magnetic field	EN 61000-4-8	Enclosure	300 A/m
Pulse magnetic field	EN 61000-4-9	Enclosure	300 A/m
Mains freq. 50 Hz	EN 61000-4-16	Signal ports	100 V 50 Hz line to earth
Mains freq. 50 Hz	SS 436 15 03	Signal ports	250 V 50 Hz line to line
Voltage dips and interruption	EN 61000-4-29	DC power ports	10 & 100 ms, interruption 10 ms, 30% reduction 10 ms, 60% reduction +20% above & -20% below rated voltage
Radiated emission	EN 55022	Enclosure	Class A
	FCC part 15		Class A
Conducted emission	EN 55022	DC power ports	Class B
Dielectric strength	EN 60950	Signal port to other isolated ports	1500 Vrms 50 Hz 1 min
		Power port to other isolated ports	1500 Vrms 50 Hz 1 min
Temperature		Operating	-40 to +70°C
		Storage & Transport	-40 to +70°C
		Maximum surface temperature	135 °C (temperatur class T4)
Humidity		Operating	5 to 95% relative humidity
		Storage & Transport	5 to 95% relative humidity
Altitude		Operating	2 000 m / 70 kPa
Reliability prediction (MTBF)	MIL-HDBK- 217F	Operating	700 000 hours @ 25°C
Vibration	IEC 60068-2-6	Operating	7.5 mm, 5 – 8 Hz 2 g, 8 – 500 Hz
Shock	IEC 60068-2-27	Operating	15 g, 11 ms
Enclosure	UL 94	Aluminium/Zink	Flammability class V-0
Dimension W x H x D			134 x 105 x 122 mm
Weight			1.5 kg
Degree of protection	IEC 529	Enclosure	IP40
Cooling			Convection
Mounting			Horizontal on 35 mm DIN-rail

Description

The DDW-222 is an Industrial Ethernet SHDSL extender with support for redundancy. The redundant protocol can be used ether on the SHDSL interface or on the built-in Ethernet switch. Also included are a RS-232 serial adapter and a 10-port Virtual Com re-director software. The protocols used for network communication is UDP or TCP. This allows the serial interface to be setup as a TCP-server or -client as well as an UDP unit. Our unique FRNT (Fast Recovery of Network Topology) technology is the fastest protocol on the market to re-configure a network in the event of any failure of a link or hardware. SHDSL represents the best of several symmetric DSL technologies. This unit provides the ability to reuse existing twisted copper pair with data rates from 192 kbit/s to 5.7 Mbit/s in both directions. The DDW-222 makes it possible to communicate over 10 km (6.2 miles) on twisted pair cable. The DDW-222 is a bridge not router and so is simple to install. All configuration is done using a web interface. The DIN rail mounted DDW-222 is designed for harsh environments and can be used in industrial and railway applications. It can be powered from two separate supplies and handle an operating voltage range of 16 – 60 VDC.

- ⌘ RS-232 serial adapter
- ⌘ 10 port Virtual Com software
- ⌘ Redundant protocol (FRNT) on SHDSL or on the Ethernet switch
- ⌘ 192 kbit/s to 5.7 Mbit/s
- ⌘ Over 10 km (6.2 miles) on twisted pair
- ⌘ Daisy chain SHDSL applications
- ⌘ Wide temperature range (-40 to +70°C) (-40 to 158°F)
- ⌘ Total galvanic isolation & transient protection
- ⌘ Industrial and Rail EMC approvals
- ⌘ Redundant power and wide DC input range
- ⌘ Configuration using web interface
- ⌘ Integrated 4-port Ethernet switch with 10/100Base-T/TX
- ⌘ Auto MDI/MDI-X
- ⌘ Auto speed on SHDSL with reliable, normal or high-speed mode
- ⌘ Comprehensive statistics
 - SHDSL • Ethernet
- ⌘ SNMP support
- ⌘ Extensive line protection with over-current / voltage suppression

Diagram showing speed versus distance

	DDW-222 @ 0.5 mm	DDW-222 @ 0.4 mm
Speed bit/s	Distance metre / miles	Distance metre / miles
192000	10000 / 6.21	6450 / 4.00
1024000	7650 / 4.75	4850 / 3.01
1280000	7050 / 4.38	4700 / 2.92
2304000	5950 / 3.69	4150 / 2.58
3328000	4900 / 3.04	3700 / 2.30
4544000	4250 / 2.64	3150 / 1.95
5696000	3650 / 2.26	2800 / 1.73

Interface specifications

Power

Rated voltage	20 to 48 VDC
Operating voltage	16 to 60 VDC
Rated current	300 mA @ 20 VDC 150 mA @ 48 VDC
Rated frequency	DC
Inrush current, I ² t	3.1 A ² s
Startup current*	400 mA
Polarity	Reverse polarity protected
Redundant power input	Yes
Isolation to	Ethernet, SHDSL, RS-232
Connection	Detachable screw terminal
Connector size	0.2 – 2.5 mm ² (AWG 24 – 12)
Shielded cable	Not required

* If external power supply is used it must meet specified inrush current.

SHDSL

Electrical specification	ITU-T G.991.2 Annex B
Data rate	192 kbit/s to 5696 kbit/s
Protocol	EFM according to IEEE 802.3-2004
Transmission range	According to ITU-T G.991.2 depending on the line quality
Protection	Overcurrent / overvoltage protection circuit and varistor
Isolation to	Power, Ethernet, RS-232
Connection	Detachable screw terminal
Connector size	0.2 – 2.5 mm ² (AWG 24 – 12)
Shielded cable	Not required
Number of ports	2

RS-232

Electrical specification	EIA RS-232
Data rate	300 bit/s to 115.2 kbit/s
Data format	7 or 8 data bits, odd, even or none parity, 1 or 2 stop bits
Protocol	Transparent, optimised by packing algorithm
Transmission range	15 m / 49 ft
Isolation to	Power, SHDSL, Ethernet TX
Connection	9-pin D-sub male (DTE)
Shielded cable	Not required
Number of ports	1

Ethernet TX

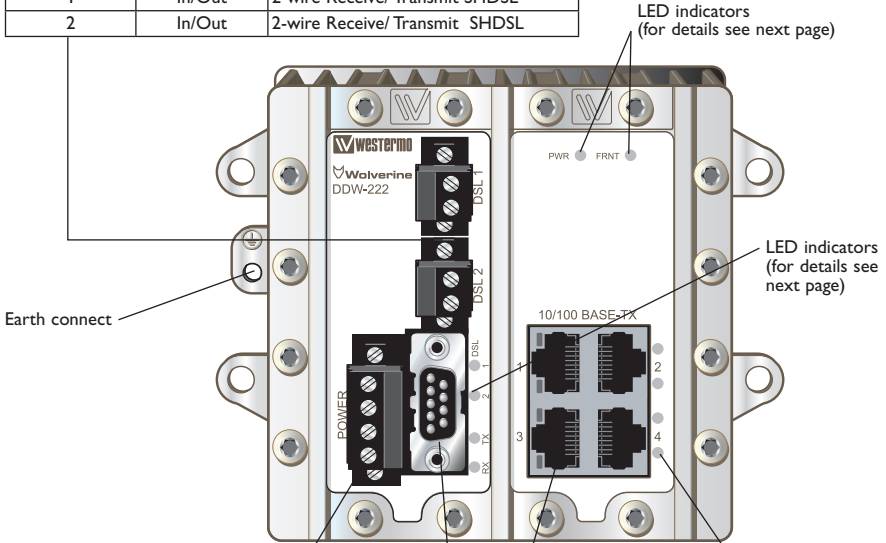
Electrical specification	IEEE std 802.3 2000 Edition
Data rate	10 Mbit/s, 100 Mbit/s, manual or auto
Duplex	Full or half
Transmission range	100 m / 328 ft
Isolation to	Power, SHDSL, RS-232
Connection	RJ-45
Shielded cable	Not required, except when installed in Railway applications as signalling and telecommunications apparatus and located close to rails**
Number of ports	4 ports marked as 1, 2, 3, 4

** To minimise the risk of interference, a shielded cable is recommended when the cable is located inside 3 m boundary to the rails and connected to this port.

Connections

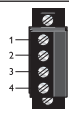
DSL screw connector 1 & 2

Position	Direction	Description
1	In/Out	2-wire Receive/ Transmit SHDSL
2	In/Out	2-wire Receive/ Transmit SHDSL



Power connection

Position	Direction*	Description
1	In	+ Voltage A
2	In	+ Voltage B
3	In	Common
4	In	Common



RS-232

Position	Direction*	Description
1	-	Not connected (DCD)
2	In	Received data (RD)
3	Out	Transmitted data (TD)
4	Out	Data terminal ready (DTR)
5	-	Signal ground (SG)
6	In	Data Set Ready (DSR)
7	Out	Request To Send (RTS)
8	In	Clear To Send (CTS)
9	-	Not connected (RI)

* Direction relative this unit

** To minimise the risk of interference, a shielded cable is recommended when the cable is located inside 3 m boundary to the rails and connected to this port. The cable shield should be properly connected (360°) to an earthing point within 1 m from this port. This earthing point should have a low impedance connection to the conductive enclosure of the apparatus cabinet, or similar, where the unit is built-in. This conductive enclosure should be connected to the earthing system of an installation and may be directly connected to the protective earth.

Ethernet TX connection (RJ-45 connector) 1 – 4**

Position	Direction*	Description
1	In/Out	TD+
2	In/Out	TD-
3	In/Out	RD+
4	-	Not Connected
5	-	Not Connected
6	In/Out	RD-
7	-	Not Connected
8	-	Not Connected

CAT 5 cable is recommended. Unshielded (UTP) or shielded (STP) connectors can be used.

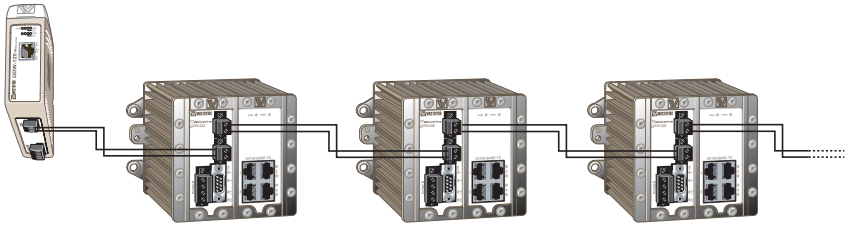
LED indicators

LED	Status	Description
PWR	OFF	No power
	ON (green)	Booting ready, unit ready
	ON (red)	Unit is booting
FRNT	OFF	FRNT disabled
	ON (green)	FRNT enabled and unit is ring member, ring ok
	Flashing (green)	FRNT enabled and unit is focal point, ring ok
	Flashing (red)	FRNT error and unit is focal point, ring broken
	ON (red)	FRNT error according to the following <ol style="list-style-type: none"> 1. If unit is ring member at least one trunk port is down 2. If unit is focal point ring is not intact
10/100BASE-TX Port 1 – 4 Green LED	OFF	No link
	ON	Link active
	Flashing	Traffic on link
10/100BASE-TX Port 1 – 4 Yellow LED	OFF	No port alarm
	ON	Port alarm
TX	OFF	No serial data transmitted
	Flashing (green)	Serial data transmitted from the unit
RX	OFF	No serial data received
	Flashing (green)	Serial data received to the unit
DSL Port 1 – 2	OFF	No link
	ON (green)	Link established
	ON (red)	Unit is booting
	Flashing (green)	Link negotiation
	Flashing (red))	Downloading firmware to DSL chip

RS-232 cable

The DDW-222 is supplied with a RS-232 cable which can be used to connect to external equipment. The supplied cable is straight and is used to extend the serial port and has the same pin out as described under RS-232 interface.

Daisy chain SHDSL Connection



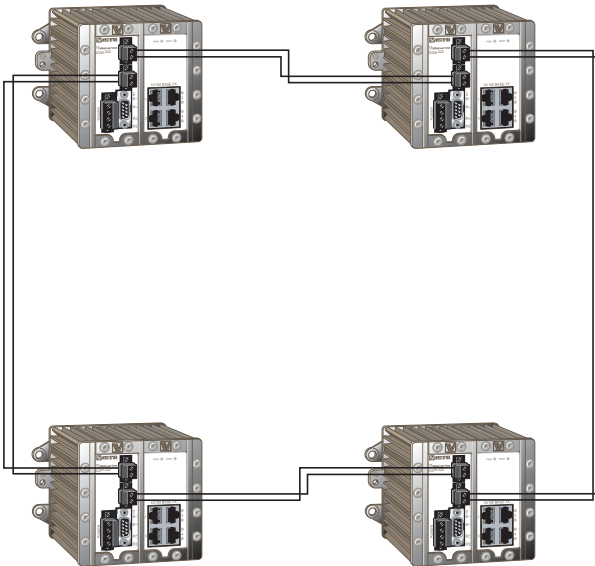
Connect DDW-120 to DDW-22x

In an SHDSL connection one unit shall be configured as CO (Central Office) and one as CPE (Customer Premises Equipment). DDW-22x factory default is, DSL1 configured as CPE and DSL2 configured as CO.

Redundant SHDSL connection

The DDW-222 are available with redundant ring technology. This eliminates network failure caused by communication failures on the ring ports. In a ring application one unit must be configured as focal point, all other units will be configured as members.

Connect DSL 1 to DSL 2 on the following units to obtain a chain of linked units.



Configuration

The unit can easily be configured via the onboard Web based configuration tool. Local IP addresses can also be configured by using the Westermo IP Config too. From the IP Config tool it is then possible to browse into the unit for further configuration.

IP Address

When delivered, the default IP address of the DDW-200 is 192.168.2.200.

The default gateway is 192.168.2.200

If the default address of the unit is valid in the connected network it is possible to access the unit directly from a web browser.

Change local IP address

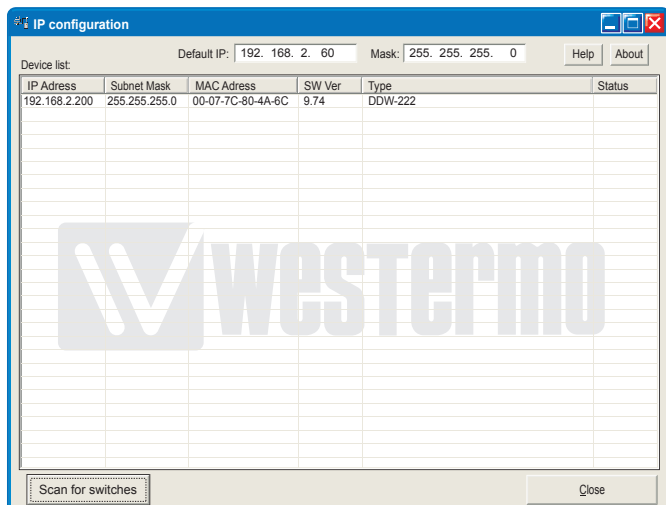
The local address of DDW-2XX can be configured using the IP Configuration tool. The IP Configuration program is available on the CD or for download from the WESTERMO web page: <http://www.westermo.com>, (choose Downloads/Software/Ethernet/Ethernet switches/)

Name: setup.exe

Install the software and start the application from a PC on the network connected to where the DDW-2XX is installed. Make sure that the Default IP of the configuration software (see figure below) is in the same subnet as your PC.

Note! If you are not sure about the subnet – consult your network administrator.

Note! IP Config version must be 10.0.0 or higher.



Note! If you are not sure about the settings - consult your network administrator.

Figure 1

By clicking the Scan for switches button the IP Configuration Software will detect the Westermo switches on the network. The software will list all Westermo managed switches or routers connected to the network. Information as in figure 1 will appear for each detected unit connected to the same network as your PC.

If you only want to change the IP address and the subnet mask, this can be done within the IP config tool.

1. Click the listed DDW-2XX that you wish to re-configure.
 2. A pop-up screen will show with the message "Access switch via web". Click Cancel, figure 2.
 3. Enter the preferred IP address, Subnet mask and IP gateway address, figure 3.
- Click Set-button to confirm the settings in the unit, figure 3.

Click the Scan for switches button again and the settings you configured will appear in the list. Now you can access the DDW-2XX via the browser for further configuration by clicking the unit with an IP address that fits your subnet. Figure 2 will appear and now you click the OK button and a web browser will be opened and redirected to the DDW-2XX unit login page, figure 5.

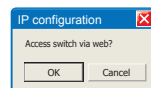
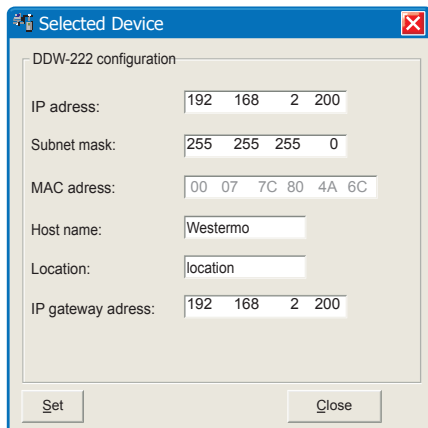


Figure 2



Click the Close button to get back to main view. You will then be asked if you would like to quit. Click the OK button, figure 4, and you will be back to the main view of the IP Configuration program (see figure 1).

Figure 3

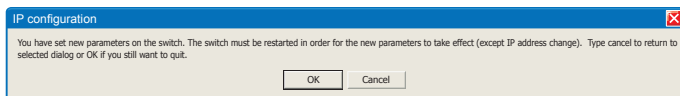
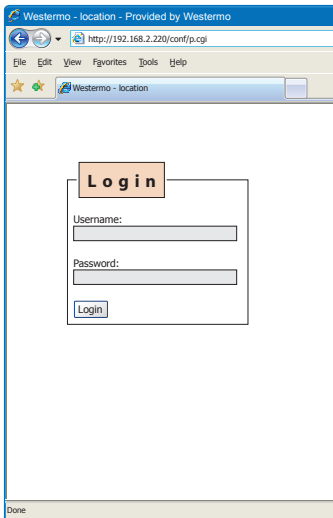


Figure 4



Log in via Web

You will be prompted with a Login screen where the default settings for Username and Password are:
Username: admin
Password: westermo

Figure 5

The unit can be easily configured via the on-board Web based configuration tool. The network interface and switch properties can be configured and stored. The Web tool also has an extended integrated help function describing all configuration options.

Note! Max 10 characters can be used in the login.

Note! For login the following characters are not valid.

ASCII 34 = "

ASCII 35 = #

ASCII 39 = "

ASCII 40 = (

ASCII 92 = \

Simple Network Management Protocol (SNMP)

The DDW-2XX supports Simple Network Management Protocol version 1 and 2c (SNMPv1 and SNMPv2c). SNMP is an Internet standard protocol (IP) developed to manage IP nodes (servers, workstations, routers, switches and hubs etc.) on an Ethernet network.

SNMP enables network administrators and control engineers to manage network performance, find and solve network problems, and plan for network growth.

The DDW-2XX MIB's are divided into groups allowing the SNMP manager to poll the SNMP agents for information.

Factory default

It is possible to set the unit to factory default settings by using two Ethernet cables and connect to the unit.

To set the unit to factory default do the following:

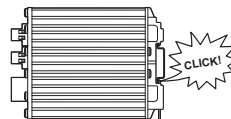
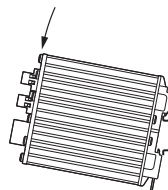
1. Connect Ethernet cable from port 1 to port 4.
2. Connect Ethernet cable from port 2 to port 3.
3. Power up the unit.
4. Wait for the unit to start up. Control that the PWR led is flashing green.
The PWR flashing indicates that the unit will be set to factory default.
5. Remove the Ethernet cables, the unit will automatically start with factory default settings.

Note! The Ethernet cables must be removed within 30 seconds from power up or the unit will do a normal start up.

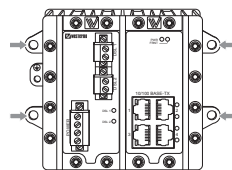
Mounting

This unit should be mounted on 35 mm DIN-rail, which is horizontally mounted inside an apparatus cabinet or similar. Snap on mounting, see figure.

35 mm DIN-rail shall be mounted with a maximum distance of 70 mm between the mounting points.

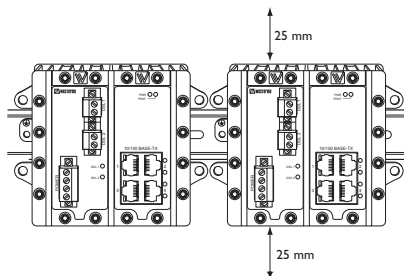


This unit can also be wall-mounted, see figure.



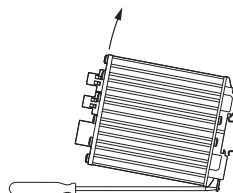
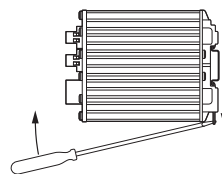
Cooling

This unit uses convection cooling. To avoid obstructing the airflow around the unit, use the following spacing rules. Minimum spacing 25 mm (1.0 inch) above /below the unit. Spacing is recommended for the use of unit in full operating temperature range and service life.



Removal

Press down the support at the back of the unit using a screwdriver. See figure.





Westermo Teleindustri AB • SE-640 40 Stora Sundby, Sweden

Phone +46 16 42 80 00 Fax +46 16 42 80 01

E-mail: info@westermo.com

Westermo Web site: www.westermo.com

Sales Units

Sweden

Westermo Data Communications AB

Svalgängen 1

SE-724 81 Västerås

Phone: +46 (0)21 548 08 00 • Fax: +46 (0)21 35 18 50

E-Mail: info.sverige@westermo.se

United Kingdom

Westermo Data Communications Ltd

Talisman Business Centre • Duncan Road

Park Gate, Southampton • SO31 7GA

Phone: +44(0)1489 580-585 • Fax: +44(0)1489 580586

E-Mail: sales@westermo.co.uk

Germany

Westermo Data Communications GmbH

Goethestraße 67, 68753 Waghäusel

Tel.: +49(0)7254-95400-0 • Fax: +49(0)7254-95400-9

E-Mail: info@westermo.de

France

Westermo Data Communications S.A.R.L.

9 Chemin de Chilly 91160 CHAMPLAN

Tél : +33 1 69 10 21 00 • Fax : +33 1 69 10 21 01

E-mail : infos@westermo.fr

Singapore

Westermo Data Communications Pte Ltd

2 Soon Wing Road #08-05

Soon Wing Industrial Building

Singapore 347893

Phone +65 6743 9801 • Fax +65 6745 0670

E-Mail: sales@westermo.com.sg

North America

Westermo Data Communications

939 N. Plum Grove Road, Suite F

Schaumburg

Chicago

Phone: +1 847 619 6068

Fax: +1 847 619 66 74

E-mail: info@westermo.com

Taiwan

Westermo Data Communications Co

F2, No. 188, Pao-Chiao Rd.

Shing-Tien City

Taipei 23145

Phone: +886 2 8911 1710

E-mail: info@westermo.com

Westermo Teleindustri AB have distributors in several countries, contact us for further information.