

20A / 25A / 32A / 40A / 63A

- Main/Emergency-Off Switch
- Main Switch

3 ... 8 pole

IP66 (front)

Four hole front mounting 36 × 36 mm



Order code structure: **Type** - **Switching programme** - **Mounting form**
 Ordering example: 3 pole Main/Emergency-Off Switch, 40A, M-padlock device: **H233 - 41300 - 234M4**

Type	Rated data (IEC 60947)			Degree of protection
	Operational current I _e AC-21A (A)	Operational power (at 380–440V) AC-23A (kW) AC-3 (kW)		Terminals
H216	20	5.5	3.7	IP20
H220	25	7.5	5.5	IP20
H226	32	11	7.5	IP20
H233	40	15	11	IP20
H263	63	22	18.5	IP20

Detailed technical data page 108.

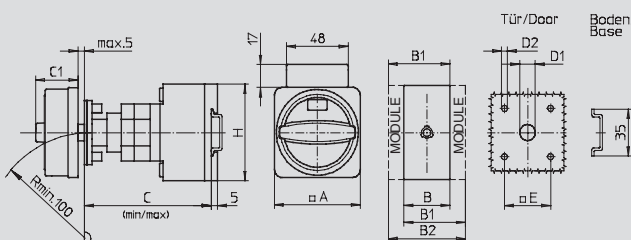
Switching progr.	Poles	Auxiliary contacts		Switching progr.	Poles	Auxiliary contacts	
		n/o	n/c			n/o	n/c
3 ... 4 pole:				6 ... 8 pole:			
41300	3	0	0	41600	6	0	0
41311	3	1	1	41611	6	1	1
41320	3	2	0	41620	6	2	0
41400	4	0	0	41800	8	0	0
41411	4	1	1	not available for type H263			
41420	4	2	0				

Switching diagrams and further switching programmes (3 ... 4 pole) page 95.

Mounting form	Operator	Main/Emergency-Off Switch	Mounting form	Operator	Main Switch
234N4		N-padlock device yellow/red	234N1		N-padlock device black
234M4		M-padlock device yellow/red	234M1		M-padlock device black
234V4 *		padlockable with V-handle yellow/red	234V1 *		padlockable with V-handle silver/black

*for 3 ... 4 pole switching programmes only

Dimensions in mm:



Modular shaft extensions see page 102.

Mounting form	A	B	B1	B2	C _{min}	C _{max}	C1	D1	D2	E	H
Types H216 / H220 / H226 / H233 (3 ... 4 pole):											
234N4 / 234N1	67	36	48	60	92	107	33	15	4.5	36	70
234M4 / 234M1	67	36	48	60	92	107	38	15	4.5	36	70
234V4 / 234V1	48	36	48	60	92	107	32	12	4.5	36	70
Types H216 / H220 / H226 / H233 (6 ... 8 pole):											
234N4 / 234N1	67	72	84	96	100	115	33	15	4.5	36	70
234M4 / 234M1	67	72	84	96	100	115	38	15	4.5	36	70
Type H263 (3 ... 4 pole):											
234N4 / 234N1	67	50	69	88	92	107	33	15	4.5	36	72
234M4 / 234M1	67	50	69	88	92	107	38	15	4.5	36	72
234V4 / 234V1	48	50	69	88	92	107	32	12	4.5	36	72